



**International
House**
Dublin



2024 DISCOVER DUBLIN

Unlock Your English Potential

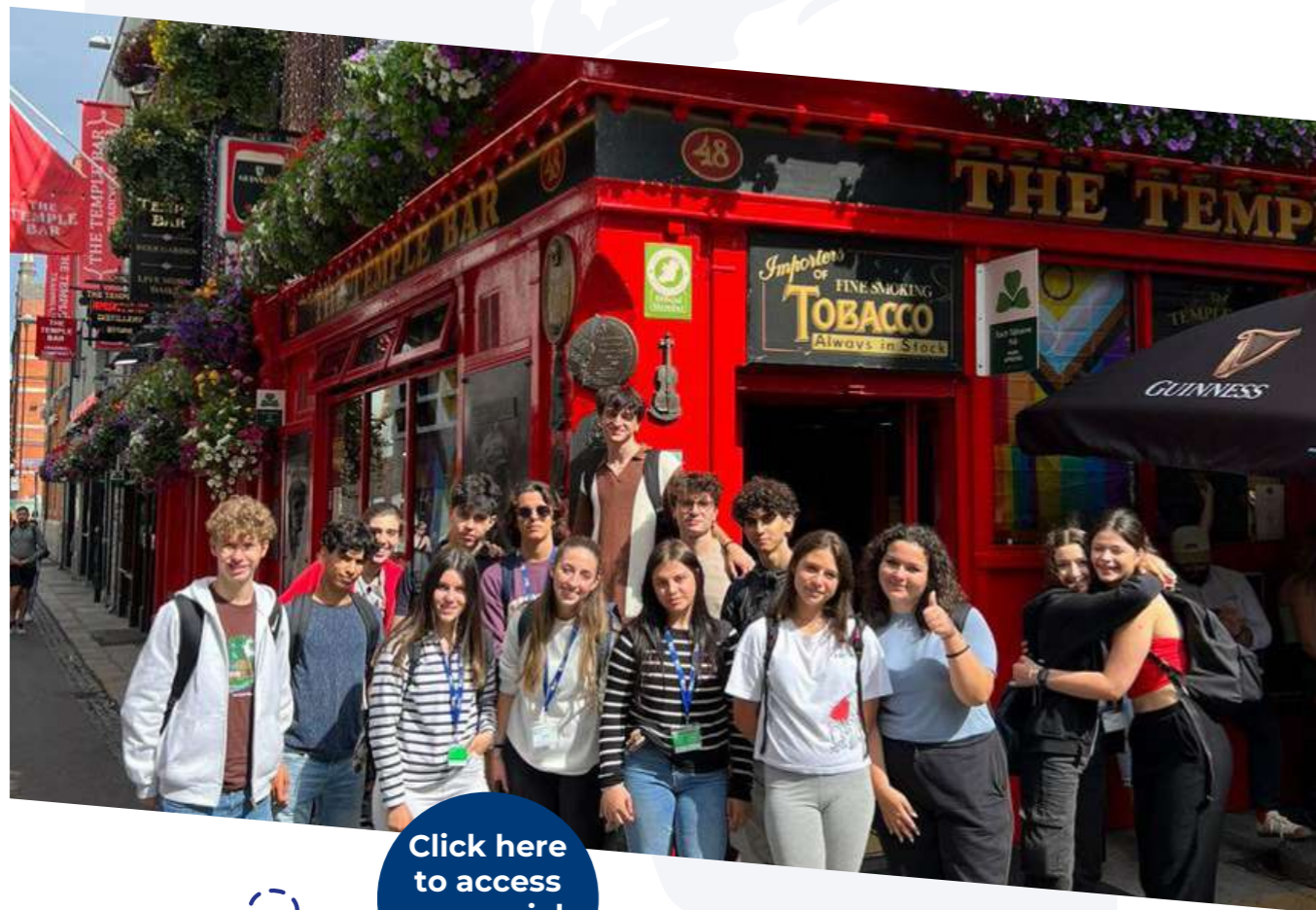
www.ihdublin.com

DISCOVER DUBLIN

OUR MISSION

We provide fast, effective learning experiences in a supportive environment to help our learners achieve their personal, professional, and life goals.

We believe that a course at our school should be a meaningful life and learning experience where our students grow in communicative confidence by forming connections with people from all over the world and where they benefit from the richness of a vibrant, dynamic multicultural learning, social and city context.



Click here to access our social media



CONTENTS

Welcome to International House Dublin

Discover Dublin
IHD Adult Campus
Our Approach to Teaching

Adults

General English
Business English
Exam Preparation - Cambridge & IELTS
Work and Study - (Non-EU only)
Gap Year - (EU only)
English & Internship - (EU only)
One-to-One
Young at Heart

Juniors

Young Adult
Wesley College Junior programme
University College Cork Junior programme
Dublin City Centre Junior programme

High School Programme

Public Schools
Private Day and Boarding Schools
Our HSP Services

Teacher Training

University of Cambridge CELTA
Teacher refresher for non-Native Speakers
General English + CLIL
General English + Strategies and Emotional Intelligence for Educators

Mini stays

Tailored Group Courses

Accommodation

Homestay
Student Residence

Student Services

Social Programme
Student Welfare
Pathway to Higher Education

WELCOME TO INTERNATIONAL HOUSE DUBLIN

OVER 5,000 STUDENTS
from more than
50 DIFFERENT NATIONALITIES
have studied at IHD last year



More than **15 course options** to fit every age and English goal



24 hours emergency phone service



Impressive and modern, **purpose-built campus**



Dedicated **welfare officer** available to meet one-to-one with students



Secure and convenient **accommodation options**



Diverse **social programme** and **study club**

25 YEARS OF EXPERIENCE

Since its establishment in 1998, International House Dublin has been dedicated to teaching English to students from across the globe. At International House Dublin, we strive to provide students with a top-quality and effective learning experience. We take pride in creating an atmosphere that fosters growth and success for all our students.

QUALITY ASSURANCE



DISCOVER DUBLIN



A city of history and charm welcomes you with its lively streets and picturesque landscapes.

Discover the captivating allure of Dublin, a city that seamlessly weaves together history, culture, and warm Irish hospitality. Explore iconic landmarks like Dublin Castle and Trinity College, immerse yourself in the vibrant atmosphere of Temple Bar, and indulge in traditional Irish cuisine in cozy pubs and restaurants. Join us at IH Dublin, located in the heart of this enchanting city, and embark on a language learning journey that combines the charm of Dublin with top-quality education and a supportive learning environment.



“ Every walk around the city was amazing, the national gallery was beautiful. the classes were light and fun but you could still learn a lot.

Martina from Bari, Italy

OUR ADULT CAMPUS

Our school is located in an impressive and modern, purpose-built campus.

Our school building with 5 floors and 42 classrooms, each of which holds a maximum of 15 students of mixed nationality. State-of-the-art facilities, located in the heart of Dublin

- 10 minutes walk from The Spire
- 3 minutes' walk from Connolly Train station
- Dynamic and friendly community
- Cafés and restaurants on the doorstep



42 classrooms
Maximum of 15
students per class



Free Wi-fi



Library



All floors are
wheelchair
accessible



Student
Canteen



Outdoor
Terrace

OUR APPROACH TO TEACHING

We prioritize student interest, active participation, and authentic communication in every course we offer. Each course is thoughtfully designed to guide students through essential aspects of grammar and vocabulary. However, our focus goes beyond mere language acquisition; we emphasize the practical application of the language, ensuring that students can use it meaningfully in real-life scenarios.



ADDITIONAL COMMUNICATIVE ACTIVITIES

Integrated extra speaking activities into each course program. These activities aim to provide learners with abundant opportunities for communicative practice and valuable feedback on their language output.

AUTHENTIC MATERIALS

Incorporating authentic materials in our curriculum responds to learners' interests and provides a motivating break from the course book. By integrating authentic materials, we expose learners to natural language use, diverse accents, and real-world communication challenges they face daily outside the school.

EXCURSION LESSONS

We firmly believe that culture plays a pivotal role in our learners' experience. To ensure a comprehensive cultural experience, we include excursion lessons that seamlessly align with topics covered in each course program.

STUDY CLUB AND SOCIAL PROGRAMME

Beyond the classroom, we actively encourage students to participate in our Study Club and Social Programme. Each week, a diverse range of social activities is organized, offering students opportunities to immerse themselves.

“International House Dublin is full of sensational teachers, didactic teaching focused on conversation, and an exceptional structure

Leonardo Raul from Brazil

At IH Dublin, we cater to all language proficiency levels, ranging from Beginner A1 to Advanced C2. Our comprehensive approach also includes preparing students for various exams, such as Trinity ISE foundation, B1 Preliminary PET, B2 First FCE, C1 Advanced CAE, C2 Advance CPE, and IELTS.

Every week, students at IH Dublin participate in a progress test. These tests serve as valuable checkpoints to monitor their language development and understanding. By regularly assessing their progress, we can provide appropriate support and guidance to help students excel in their language learning journey.



YOUR PROGRESS

CHOOSE YOUR IDEAL COURSE

Discover the perfect language course to align with your unique goals, interests, and availability. Whether you have a few weeks or an entire year to dedicate to your studies, we have the ideal program for you.



Adults

General English
Business English
Exam Preparation - Cambridge & IELTS
Work and Study - (Non-EU only)
Gap Year- (EU only)
English & Internship- (EU only)
One-to-One
Young at Heart

Juniors

Young Adult
Wesley College Junior programme
University College Cork Junior programme
Dublin City Centre Junior programme

High School Programme

Public Schools
Private Day and Boarding Schools

Teacher Training

University of Cambridge CELTA
Teacher refresher for non-Native Speakers
General English + CLIL
General English + Strategies and Emotional Intelligence for Educators

Mini stays

Tailored Group Course

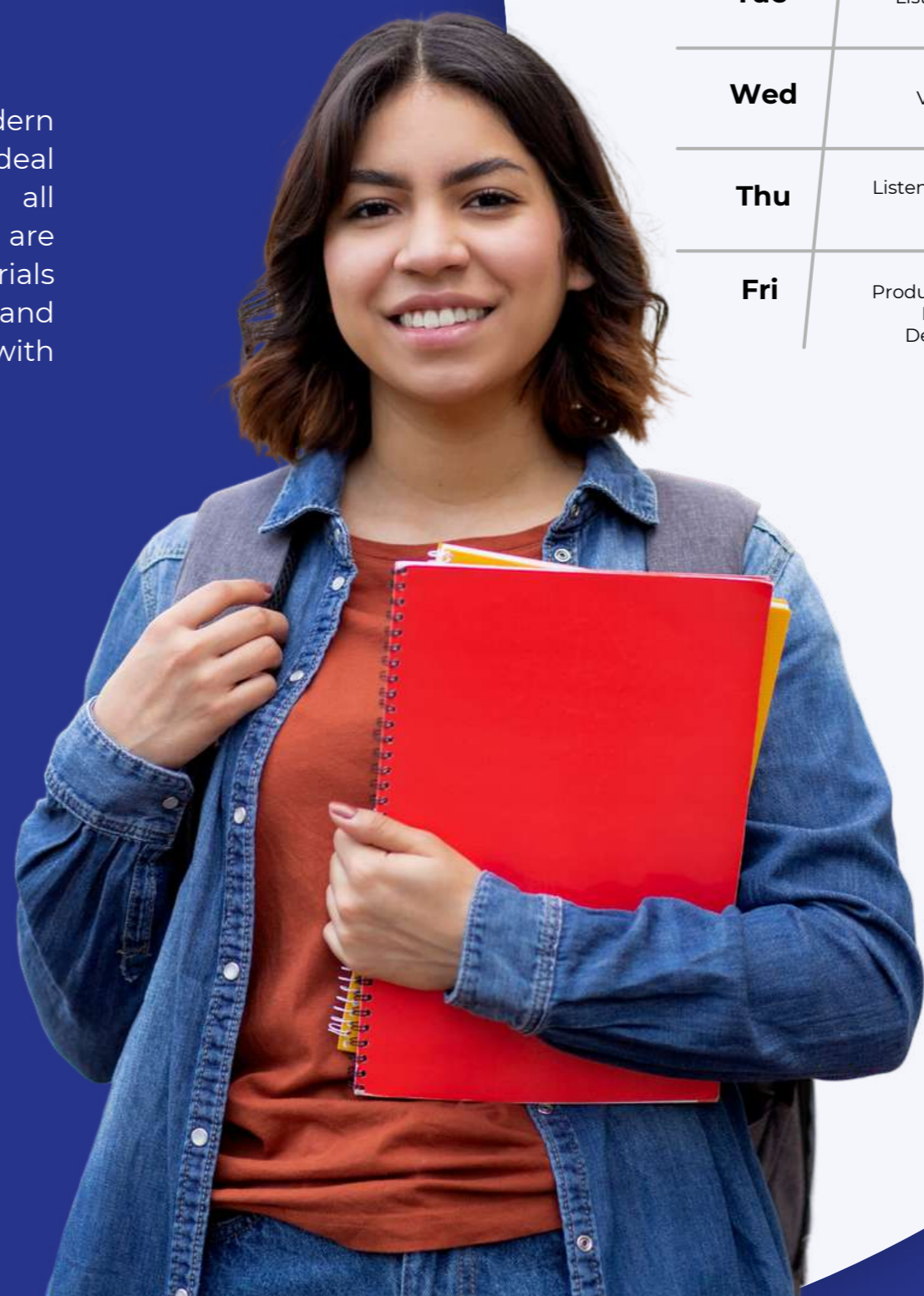
ADULTS



Sample Week

GENERAL ENGLISH

Our General English classes embrace a modern communicative approach to provide an ideal learning environment for students of all backgrounds and language abilities. Lessons are delivered using a range of real-life English materials that integrate language (grammar, vocabulary) and skills (reading, writing, speaking, and listening), with a particular focus on communicative practice.



Mon	Vocabular and agreeing on weekly objectives	Break	Listening and Speaking
Tue	Listening and speaking		Grammar
Wed	Vocabulary and speaking		Listening and Speaking + Grammar
Thu	Listening/ Reading and vocabulary		Practical English + Weekly review and progress test
Fri	Productive Skills and Language Development		Feedback or Real World Task

In the 20-hour program, there is an additional weekly session dedicated to culture, communication, and vital 21st-century skills. This session covers various topics, including problem-solving activities, self-care, mindfulness, and digital media workshops.



DURATION
1 TO 25 WEEKS



START DATES
ANY MONDAY



LEVEL
BEGINNER (A1) TO
ADVANCED (C1)



AGE
MINIMUM
AGE 16

SCHEDULE OPTIONS

20 hours AM classes

09.00 to 13.30
Monday to
Friday

16 hours AM classes

09.00 to 13.30
Monday to
Thursday

15 hours PM classes

13.45 to 17.00
Monday to
Friday

All Levels

Sample Week

Mon	Reading and agreeing on weekly objectives	Break	Reading + Vocabulary + Speaking and Language Feedback
Tue	Listening and speaking + Vocabulary		Writing formal and informal work emails
Wed	Company structure + Speaking and Language feedback		Grammar
Thu	Participating actively in work discussions Listening and speaking Practice and feedback		Practical English + Weekly review and progress test
Fri	Case Study + Company presentation		Market and Context + Q&A

For students taking the 20 hour-program, an additional session per week is included that focuses on communicative professional skill building, including case studies and company visits, among others.

From Level B2



BUSINESS ENGLISH

Our Business English program is designed to equip you with the necessary communication skills to thrive in the fast-paced world of international business. With a focus on language-based skills, workshops, and professional skill-building, you'll gain valuable insights into the business field. Through our comprehensive curriculum, you'll learn to excel in various aspects of business communication, from preparing for interviews and corporate meetings to giving impactful presentations and effective communication via telephone, text, and email.



DURATION
1 TO 25 WEEKS



START DATES
ANY MONDAY



LEVEL
FROM LEVEL UPPER INTERMEDIATE (B2))



AGE
MINIMUM AGE 16

SCHEDULE OPTIONS

20 hours AM classes
09.00 to 13.30
Monday to Friday

16 hours AM classes
09.00 to 13.30
Monday to Thursday

EXAM PREPARATION

CAMBRIDGE & IELTS

The Exam Preparation courses aim to refine practical academic and English communication skills essential for excelling in these exams. The program's content includes regular exam tutorials and mock exams, practice with authentic past exam papers for both written and oral assessments, and real-life English language tasks and topics designed to cultivate practical academic skills. Students are encouraged to register for their chosen exam at least five weeks in advance.



Mon	Exam strategy and agreeing on weekly objectives	Break	Listening and Speaking
Tue	Listening and speaking		Vocabulary + Speaking exam practice and feedback
Wed	Exam strategy + Listening for gist and specific information + Speaking Exam practice		Grammar and speaking practice
Thu	Language review + Exam strategy + Practice and Feedback		Practical English + Authentic Listening/reading + Weekly review and progress test
Fri	Group task and Discussion		Classroom review and feedback

In the 20-hour program, there is an additional weekly session dedicated to culture, communication, and vital 21st-century skills. This session covers various topics, including problem-solving activities, self-care, mindfulness, and digital media workshops.



DURATION

1 TO 25 WEEKS



START DATES

ANY MONDAY



LEVEL

MINIMUM LEVEL BASED ON EXAM



AGE

MINIMUM AGE 16

SCHEDULE OPTIONS

20 hours AM classes

09.00 to 13.30
Monday to Friday

16 hours AM classes

09.00 to 13.30
Monday to Thursday

15 hours PM classes

13.45 to 17.00
Monday to Friday

Academic IELTS
Cambridge B1 (PET)
Cambridge B2 (FCE)
Cambridge C1 (CAE)

Click here for the Exam dates

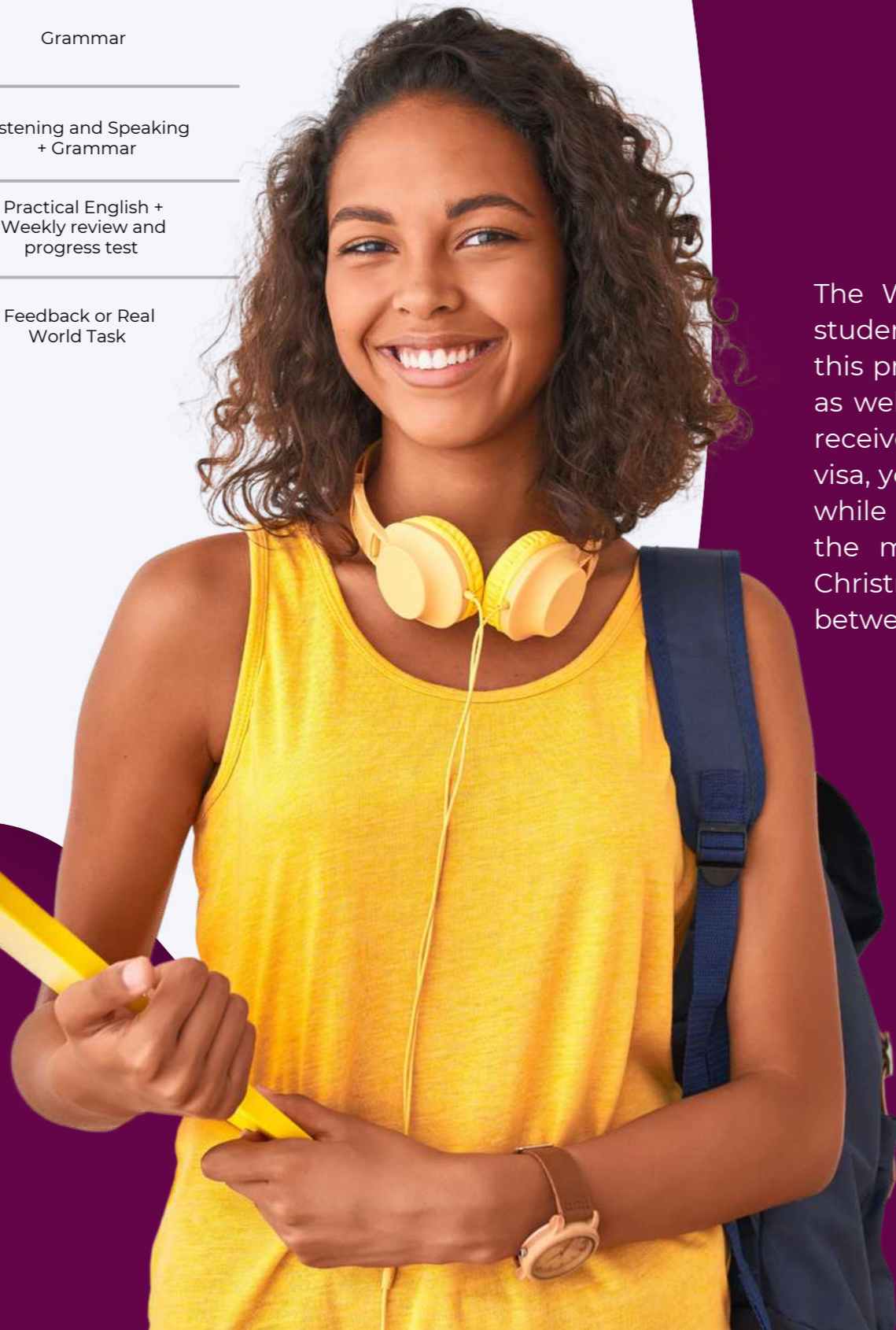
Sample Week

Mon	Vocabular and agreeing on weekly objectives	Break	Listening and Speaking
Tue	Listening and speaking		Grammar
Wed	Vocabulary and speaking		Listening and Speaking + Grammar
Thu	Listening/ Reading and vocabulary		Practical English + Weekly review and progress test
Fri	Productive Skills and Language Development		Feedback or Real World Task

For students taking the 20 hour-programme, an additional session per week is included that focuses on communicative professional skill building, including case studies and company visits, among others.

All Levels

Click here for a full guide



WORK & STUDY

(NON-EU STUDENTS)

The Work & Study programme is available for non-EU students wishing to study long-term in Ireland. Students on this programme will have 25 weeks of classes at IH Dublin, as well as 10 weeks of holidays, which will entitle them to receive the Stamp 2 student visa for 8 months. Under this visa, you are allowed to work part-time (20 hours per week) while studying, and full-time (40 hours per week) during the months of June, July, August, September, and at Christmas time, if on holidays. This course weeks are split between General English and Exam Preparation classes.



DURATION

25 WEEKS OF CLASSES + 10 OF HOLIDAYS



START DATES

ANY MONDAY



LEVEL

BEGINNER (A1) TO ADVANCED (C1)



AGE

MINIMUM AGE 18

SCHEDULE OPTIONS

20 hours AM classes

09.00 to 13.30
Monday to Friday

16 hours AM classes

09.00 to 13.30
Monday to Thursday

15 hours PM classes

13.45 to 17.00
Monday to Friday

*Students doing Work and Study must do an Exam and book medical and PEL insurance

ENGLISH & INTERNSHIP

(EU ONLY)

Our English and Internship Programme combines an English language course with an unpaid placement in an Irish company. Students can improve their English fluency while gaining practical experience in a professional, English-speaking work environment. The program offers both entry-level and professional work placements, requiring an up-to-date CV/Resume and Cover Letter in English. It includes a minimum of 2 weeks of any standard IH course (General English, Business English, or Exam Preparation) and placement in a suitable Irish-based host company for a minimum of 2 weeks of work experience. Work Experience Timetable depends on position and company of placement.

Both full-time and part-time placements available



DURATION

1 TO 25 WEEKS



START DATES

ANY MONDAY



LEVEL

ENTRY LEVEL:
FROM
INTERMEDIATE
PROFESSIONAL:
FROM UPPER-
INTERMEDIATE



AGE

MINIMUM
AGE 16

SCHEDULE OPTIONS

20 hours AM classes

09.00 to 13.30
Monday to Friday

16 hours AM classes

09.00 to 13.30
Monday to Thursday

15 hours PM classes

13.45 to 17.00
Monday to Friday

Sample Week

Mon	Vocabular and agreeing on weekly objectives	Break	Listening and Speaking
Tue	Listening and speaking		Grammar
Wed	Vocabulary and speaking		Listening and Speaking + Grammar
Thu	Listening/ Reading and vocabulary		Practical English + Weekly review and progress test
Fri	Productive Skills and Language Development		Feedback or Real World Task

For students taking the 20 hour-program, an additional session per week is included that focuses on communicative professional skill building, including case studies and company visits, among others.

All Levels



GAP YEAR

(EU ONLY)

Elevate your English proficiency through our comprehensive 25-week General English program tailored for adults in the vibrant city of Dublin. This dynamic curriculum is meticulously crafted to enhance your everyday communication skills, enabling you to navigate various contexts with confidence. Dive into engaging lessons that cover a spectrum of language topics, bolstered by interactive activities and real-life language practice. Whether it's honing your speaking fluency, refining your writing finesse, or perfecting your listening comprehension, our program caters to all facets of language acquisition. Immerse yourself in a supportive learning environment that fosters growth and self-assurance.



DURATION

25 WEEKS OF CLASSES



START DATES

ANY MONDAY



LEVEL

BEGINNER (A1) TO ADVANCED (C1)



AGE

MINIMUM AGE 16

SCHEDULE OPTIONS

20 hours AM classes

09.00 to 13.30
Monday to Friday

16 hours AM classes

09.00 to 13.30
Monday to Thursday

15 hours PM classes

13.45 to 17.00
Monday to Friday

YOUNG AT HEART

Our Young at Heart Programme is designed for mature students who want to refresh their English language skills, explore Ireland's history and culture, and connect with like-minded peers from around the world. The program offers a combination of in-class and excursion-based learning experiences, with the curriculum tailored to suit the interests and age group of the participants. Learners will engage in real-life, authentic English materials that match their proficiency level.



DURATION

1 TO 2 WEEKS



START DATES

10/06 TO 21/06
01/07 TO 12/07
12/08 TO 23/08



LEVEL

BEGINNER (A1) TO
ADVANCED (C1)



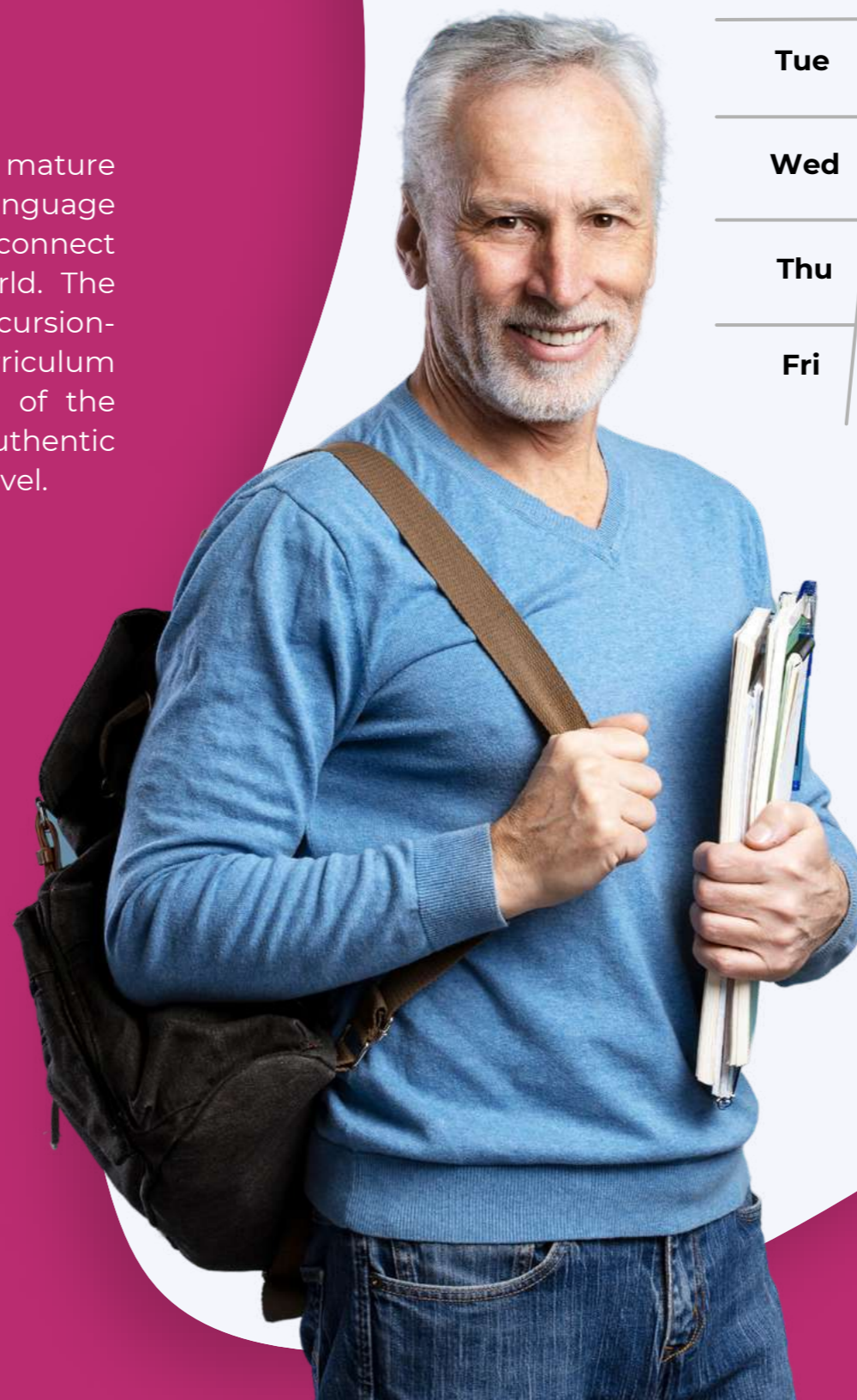
AGE

MINIMUM
AGE 50

SCHEDULE OPTIONS

20 hours AM classes

09.00 to 13.30
Monday to Friday



Sample Week

Mon	Needs analysis and agreeing on weekly objectives	Break	Lifestyle habits
Tue	Listening and speaking		National Museum of Ireland– Archaeology Excursion Class
Wed	Irish Literature Reading/ listening Understanding vocabulary		Oscar Wilde Walking Tour + Excursion Class
Thu	Language review + Practice and Feedback		Hugh Lane Gallery, Parnell Square Famous Irish Artists + Discussion and feedback
Fri	Speaking and language feedback		Irish Icons Walking Tour + Discussion and feedback

Specially designed for students 50+

Dates:

10/06 to 21/06
01/07 to 12/07
12/08 to 23/08

All Levels



BILDUNGSURLAUBS

In today's internationally-oriented business world, confidence in English communication is becoming more and more vital for both employability and successful business practices. IH Dublin offers package programmes specifically recognised for educational leave (Bildungsurlaub) for German employees, focusing on the practical development of your English language skills, which you will find immediately applicable on your return home, and your return to work.

IH Dublin is recognised for Bildungsurlaub Package



START DATES

ANY MONDAY



LEVEL

BEGINNER (A1) TO
ADVANCED (C1)



AGE

MINIMUM
AGE 16

SCHEDULE OPTIONS

25 hours

- 20 hours of group General English lessons: 09.00 to 13.30 Monday to Friday
- 5 hours of Personalised Study Programme, focusing on additional skills and language development

30 hours

- 20 hours of group General English lessons: 09.00 to 13.30 Monday to Friday
- 5 hours of Personalised Study Programme, focusing on additional skills and language development
- 5 hours of project work and teacher-directed self-study

Available
Online or
In Person

ONE TO ONE

As an addition or option to our group classes, our One-to-One and Executive Courses are customized to meet each student's specific requirements, making them ideal for focusing on particular language skills or subjects. These programs offer a comprehensive needs analysis and level test, a tailor-made curriculum, and flexible scheduling for both online and in-person classes at IH Dublin, ensuring convenience and personalization.



DURATION

MINIMUM 60
MINUTES



START DATES

ANY MONDAY



LEVEL

BEGINNER (A1) TO
ADVANCED (C1)



AGE

ALL AGES

FLEXIBLE SCHEDULE

All Levels

JUNIORS



YOUNG ADULT

Our Young Adult Programme offers an ideal opportunity for students seeking to immerse themselves in a city center campus environment alongside peers of the same age group and shared interests. This program is exclusively designed for students aged between 16 and 19 years and is held at our Dublin city center campus.

Arrival/departure days: Homestay accommodation Saturday or Sunday, Residential accommodation (18+) Sunday only



DURATION

1 TO 8 WEEKS



DATES

17/06 TO 09/08



LEVEL

BEGINNER (A1) TO ADVANCED (C1)



AGE

16 TO 19 YEARS OLD

What is included?

- **20 hours of mixed nationality group lessons** per week. Students can choose from General English classes or Exam Preparation Courses (PET, FCE, CAE, IELTS).
- **Accommodation:** Option for full board in a homestay, sharing a room with a student of a different nationality (where available), or self-catered accommodation in a single room with en-suite (for ages 18+).
- **LEAP Travel Card:** Provides unlimited travel on public buses, DART/trains, and LUAS/trams in Dublin.
- **Social and Cultural Programme:** Afternoon visits and activities scheduled 4 days per week (Monday to Friday), group dinners organized once a week, and a full-day excursion every Saturday.

Sample Week

	Morning	Afternoon	Evening
Mon	English Language Classes	Orientation Tour	Evening with host family
Tue	English Language Classes	National Museum Archaeology	Evening with host family
Wed	English Language Classes	Phoenix Park	Jump Zone & Pizza Night
Thu	English Language Classes	Croke Park	Evening with host family
Fri	English Language Classes	Dun Laoighre	Evening with host family
Sat	Full Day trip Glendalough visitor Centre, upper lake nature walk		Evening with host family
Sun	Day with Host family		Evening with host family

**All Included
(Classes,
Accommodation
and Activities)**

**Dates:
17/06 to
09/08**



Sample Week

	Morning	Afternoon	Evening
Mon	English Language Classes	Excursion Dublin city Centre	Movie night (Residential Students)
Tue	English Language Classes	Campus activity Digital Media	Irish Dancing (Residential Students)
Wed	English Language Classes	Excursion Howth Village	Quiz Night (Residential Students)
Thu	English Language Classes	Conversation club Irish Sport	Irish Music workshop (Residential Students)
Fri	English Language Classes	Campus activity Public Speaking workshop	Disco night (All students)
Sat	Glendalough visitor Centre, upper lake nature walk. (All students)		Karaoke (Residential Students)
Sun	Pic Nic and games in Marley Park (Residential Students)		Cinema (Residential Students)

WESLEY COLLEGE JUNIOR PROGRAMME

(HOMESTAY AND RESIDENTIAL)

Wesley College is an exclusive, private boarding school located in the safe residential area of Ballinteer, South Dublin; in the foothills of the Dublin mountains. The school is just 15 minutes by LUAS / tram to Dublin city centre.

Starts: Every Monday within outlined dates

Arrival / departure days: Sunday only

Class timetable: Monday to Friday, Morning or afternoon timetable

Dates:
01/07 to
26/07



DURATION

1 TO 4 WEEKS



DATES

01/07 TO 26/07



LEVEL

BEGINNER (A1) TO
ADVANCED (C1)



AGE

9 TO 17
YEARS OLD

What is included?

15 hours of mixed nationality group lessons per week. Choose between General English classes or Exam Preparation Courses (PET or FCE). Optional PET or FCE exams available for an additional fee.

Full-Board Accommodation:

Homestay Accommodation: Live with host families, sharing rooms with students of various nationalities (availability permitting). Daily breakfast and dinner provided, plus weekend packed lunches. Weekdays offer diverse lunch options in the school dining hall. Transportation on private IH school bus for students living over 15 minutes' walk away.

Student Residence: Separate boarding houses for girls and boys. Spacious shared bedrooms (2 to 6 beds) with bed linen and towels. Communal games and relaxation rooms. Varied menu for breakfast, lunch, and dinner in the school dining hall.

Transport: Transportation on private IH school bus.

Social and Cultural Programme: Engaging activities include sports, cultural excursions, and Project-Focused tasks enhancing communication and 21st-century skills. Digital media workshops for creating e-portfolios, podcasts, blogs, and online newsletters during the Project Focus. Activities available Monday to Friday, with two half-day trips weekly. Daily evening activities for residential students, weekly for homestay students. Full-day Saturday excursions, plus a Sunday half-day excursion exclusive to residential students.

UNIVERSITY COLLEGE CORK JUNIOR PROGRAMME

(HOMESTAY AND RESIDENTIAL)

Cork is Ireland's second-largest city known for its friendly locals and unique culture. Our program is located at the historical University College Cork, within a 15-minute walk from Cork city center. The campus offers modern classrooms, a campus restaurant, and sports facilities with trained coaches, along with internet and Wi-Fi access throughout.

Starts: Every Monday within the outlined dates

Arrival/departure days: Sunday only

Class timetable: Monday to Friday, Morning or afternoon timetable



DURATION

1 TO 4 WEEKS



DATES

01/07 TO 26/07



LEVEL

BEGINNER (A1) TO
ADVANCED (C1)



AGE

9 TO 17
YEARS OLD

What is included?

15 hours of mixed nationality group lessons per week. Choose between General English classes or Exam Preparation Courses (PET or FCE). Optional PET or FCE exams are available for an additional fee.

Full-Board Accommodation:

Homestay Accommodation: Live with host families, sharing a room with students of different nationalities (where available). Daily breakfast and dinner provided, plus weekend packed lunches. Weekdays offer diverse lunch options in the school dining hall. Transportation card provided for students living over 15 minutes walk away.

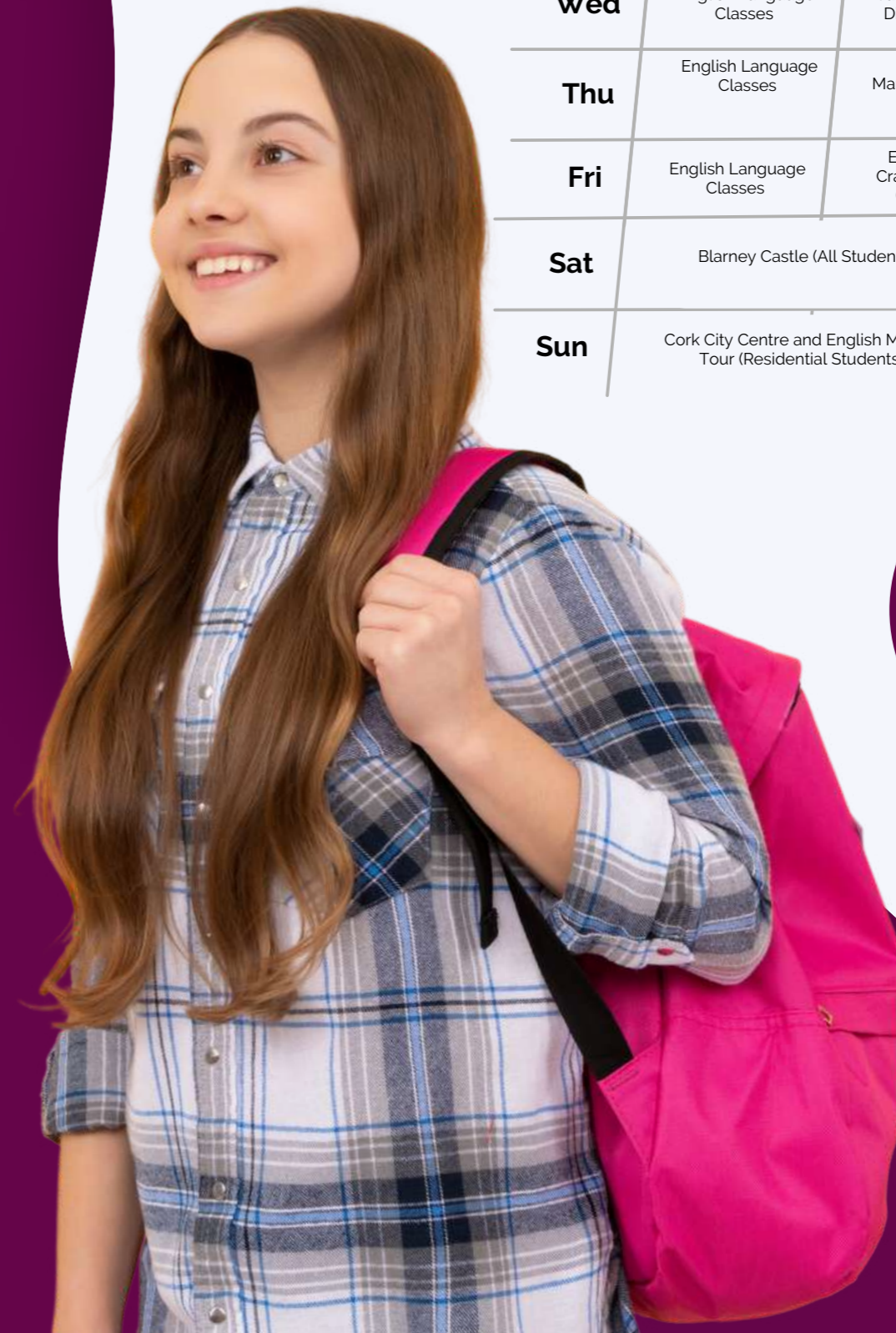
Residential Boarding: Modern, on-campus apartments with 3-5 single rooms, a fully equipped kitchen, and communal living area with TV. Bed linen and towels are provided. Options available for shared or en-suite bathrooms. A varied menu for breakfast, lunch & dinner, provided in the university campus restaurant every day.

Social and Cultural Programme: Engaging activities include sports, cultural excursions, and Project-Focused tasks enhancing communication and 21st-century skills. Digital media workshops for creating e-portfolios, podcasts, blogs, and online newsletters during the Project Focus. Activities are available Monday to Friday, with two half-day sport sessions in the Mardyke Complex weekly. Daily evening activities for residential students, and weekly for homestay students. Full-day Saturday excursions, plus a Sunday half-day excursion exclusive to residential students.

Sample Week

	Morning	Afternoon	Evening
Mon	English Language Classes	Guided tour of UCC campus	Movie night (Residential Students)
Tue	English Language Classes	Mardyke Sports	Irish Dancing (Residential Students)
Wed	English Language Classes	Campus activity Digital Media	Quiz Night (Residential Students)
Thu	English Language Classes	Mardyke Sports	Irish Music workshop (Residential Students)
Fri	English Language Classes	Excursion Crawford Art Gallery	Disco night (All students)
Sat	Blarney Castle (All Students)		Karaoke (Residential Students)
Sun	Cork City Centre and English Market Tour (Residential Students)		Cinema (Residential Students)

Dates:
01/07 to
26/07



NEW

Sample Week

	Morning	Afternoon
Mon	English Language Classes	Excursion Dublin city Centre
Tue	Digital Media Activity	English Language Classes
Wed	English Language Classes	Excursion Howth Village
Thu	Irish Dance Workshop	English Language Classes
Fri	English Language Classes	EPIC Museum
Sat	Glendalough visitor Centre, upper lake nature walk. (All students)	
Sun	Day with Host family	



Dates:
17/06 to
09/08

DUBLIN CITY CENTRE JUNIOR PROGRAMME

(HOMESTAY ONLY)

Our City Centre junior program presents the perfect chance for younger students to enhance their language abilities, all while partaking in cultural experiences and city-centered activities in Dublin. This program takes place at our main adult campus.

Starts: Every Monday within the outlined dates

Arrival/departure days: Sunday only

Class timetable: Monday to Friday, Morning or afternoon timetable



DURATION
1 TO 8 WEEKS



DATES
17/06 TO 09/08



LEVEL
BEGINNER (A1) TO ADVANCED (C1)



AGE
10 TO 15 YEARS OLD

What is included?

15 hours of mixed nationality group lessons per week. Choose between General English classes or Exam Preparation Courses (PET or FCE). Optional PET or FCE exams are available for an additional fee.

Full-Board Accommodation:

Homestay Accommodation: Live with host families, sharing rooms with students of various nationalities (availability permitting). Daily breakfast and dinner are provided by the host family, plus a hot lunch in the school canteen.

Transport: Transportation on private IH school bus.

Social and Cultural Programme: Engaging activities include cultural excursions, and Project-Focused tasks enhancing communication and 21st-century skills. Activities are available Monday to Friday, with two half-day trips weekly. Full-day Saturday excursions.

HIGH SCHOOL



HIGH SCHOOL PROGRAMME

Our well-established High School Programme offers placement services for students in top public and private schools across Ireland. As founding members of the AGPI, they prioritize the highest standards of guardianship, ensuring students' safety and support throughout their stay. Regular academic progress and welfare updates are provided to parents, maintaining open communication and confidence in their child's well-being. The program allows students aged 12-18 to experience personal growth, cultural immersion, and English language proficiency while studying a diverse range of academic subjects in science, technology, and the arts within the Irish educational system.



DURATION

6 MONTHS
TO 1 YEAR



LEVEL

MINIMUM OF
MEDIATE (B1)



AGE

12 TO 18

OPTIONS

Full Academic September - June

One Term September - December / January - Easter / Easter - June

Two Terms September - Easter / January - June



Once in a
lifetime
experience



**EU Students
Only**

PUBLIC SCHOOLS

national House Dublin collaborates with more than 50 state schools all across Ireland, chosen for their academic excellence, willingness to accept national students and understanding of the High School Programme. The partnership benefits both the students and the schools, fostering a valuable cultural exchange. To ensure optimal integration, student numbers in each school are carefully regulated. These schools are typically situated in smaller communities outside major cities. Students stay with local host families, conveniently located near the school, and are encouraged to actively participate in school and community life.

Our State School Programme offers:

- Registration
- School & homestay placement
- Full guardianship
- Full board homestay accommodation for length of programme, Accommodation during school closure is not included.
- Orientation week, a full schedule of activities and optional English language lessons.
- An opportunity for students to add on an FCE Exam Course at our city centre, adult school.

PRIVATE DAY AND BOARDING SCHOOLS

International House Dublin proudly collaborates with the finest private schools in Ireland.

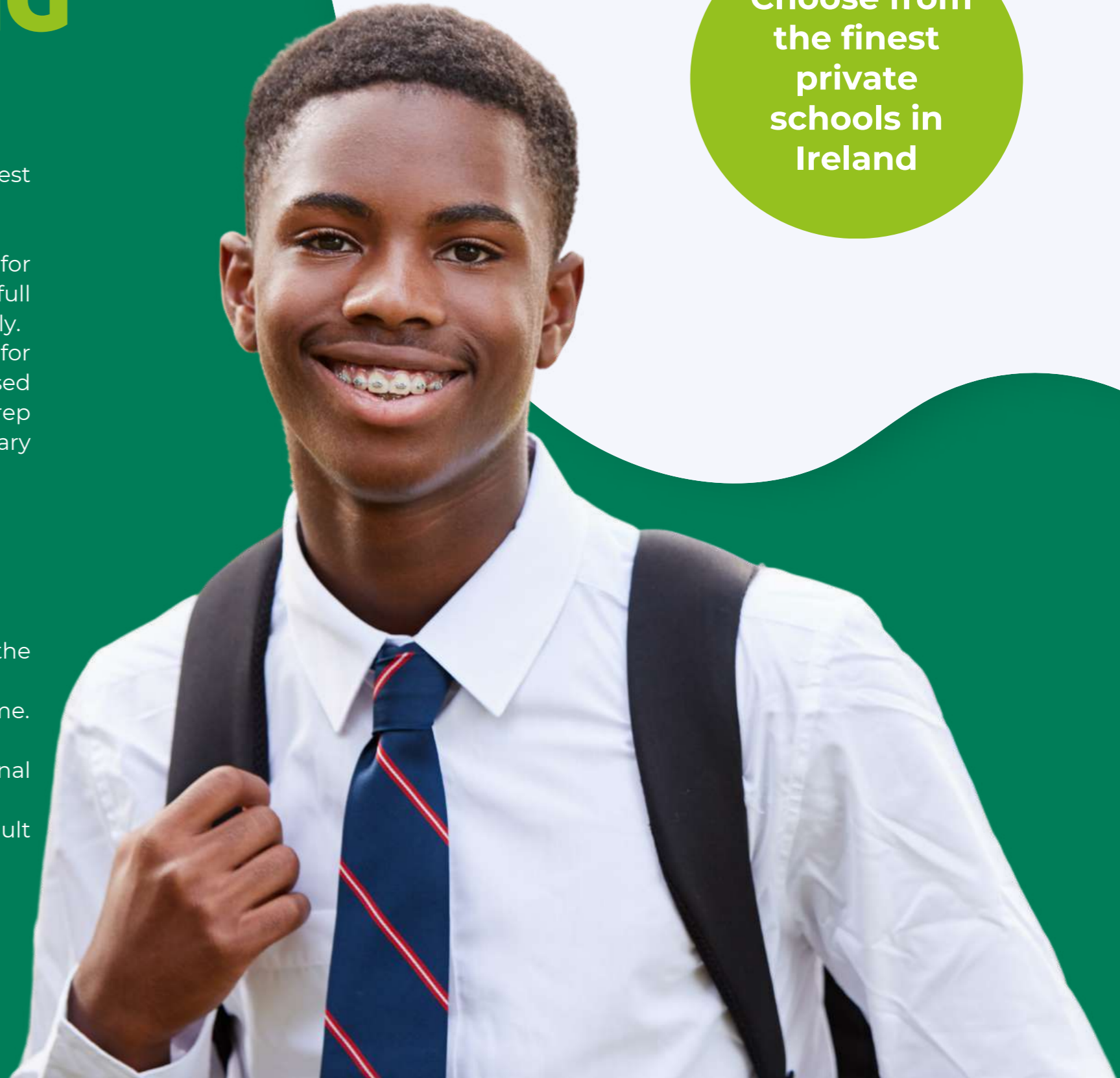
Private Day School Programme: Comprehensive package for students aged 12-18 with host family accommodation and full guardianship. Attend day school while living with a host family.

Private Boarding Programme: Full academic year option for students aged 11-18. Experience smaller class sizes, supervised homework, and a range of activities. Ages 11-13 can opt for Prep school, starting studies in Ireland from the last year of primary education.

Our State School Programme offers:

- Registration
 - School & homestay placement
 - Full guardianship
 - Full board homestay accommodation for the length of the programme. OR
 - Boarding accommodation for the length of the programme.
- Accommodation during school closure is not included.
- Orientation week, a full schedule of activities and optional English language lessons.
 - Option to add an FCE Exam Course at our city centre adult school.

Choose from
the finest
private
schools in
Ireland



HIGH SCHOOL PROGRAMME

OUR SERVICES

PRE-ARRIVAL

- Thorough assessment of student needs & qualifications
- Selection of suitable schools and provision of information on chosen schools and the Irish education system
- Selection of comfortable Host Family
Accommodation with easy access to the school
- Payment of School Fees
- Visa and registration service for non-EU students

- AGPI-accredited Guardianship
- Airport transfers & student travel coordination
- Mid-term and bank Holiday housing
- Additional tuition teacher sourcing (extra fees apply)
- School visits, academic support & parent/teacher conference attendance
- Contingency Fund administration
- Academic & and general progress reports
- Welfare & accommodation monitoring
- Cultural activities & outings
- Host Family & Student Orientation
- School book & uniform guidance
- 24hr HSP Emergency Contact

DURING

AFTER

- Timely processing of documents as required for validation/certification
- Contingency Fund balancing statements are forwarded 2 months after the student has departed and statements can be issued upon request throughout the year.



TEACHER TRAINING



happy	tall	hopeful	occupied
sad	sane	serious	free
rich	optimistic	sober	wise
poor	corageous	fresh	pretty
short	brave	tired	ugly

CELTA

International House Dublin offers the CELTA (University of Cambridge TEFL) course, the most widely recognized English language teaching qualification globally. As the longest-running CELTA center in Dublin, they provide both full and part-time courses. These courses are externally assessed by a University of Cambridge ESOL moderator, ensuring the highest standard for teacher training.

The CELTA course caters to various candidates, including those entirely new to teaching, individuals with little or no prior language teaching training, teachers from other subjects looking to transition into language teaching, and those seeking a refresher course or a more practical and internationally recognized qualification in language teaching.

Become a highly qualified English teacher

Click here for more details about the course and application process



DURATION

FULL-TIME: 4 WEEKS
PART-TIME: 15 WEEKS



START DATES

FULL-TIME:	PART-TIME:
08/01 TO 02/02	06/02 TO 19/05
04/03 TO 29/03	TP: 26/02 TO 01/03
29/04 TO 24/05	AND 08/04 TO 12/04
27/05 TO 21/06	26/08 TO 06/12
01/07 TO 26/07	TP: 30/09 TO 04/10
02/09 TO 27/09	AND 21/10 TO 25/10
04/11 TO 29/11	



LEVEL

MINIMUM
ADVANCED (C1)



AGE

MINIMUM
AGE 18

SCHEDULE OPTIONS

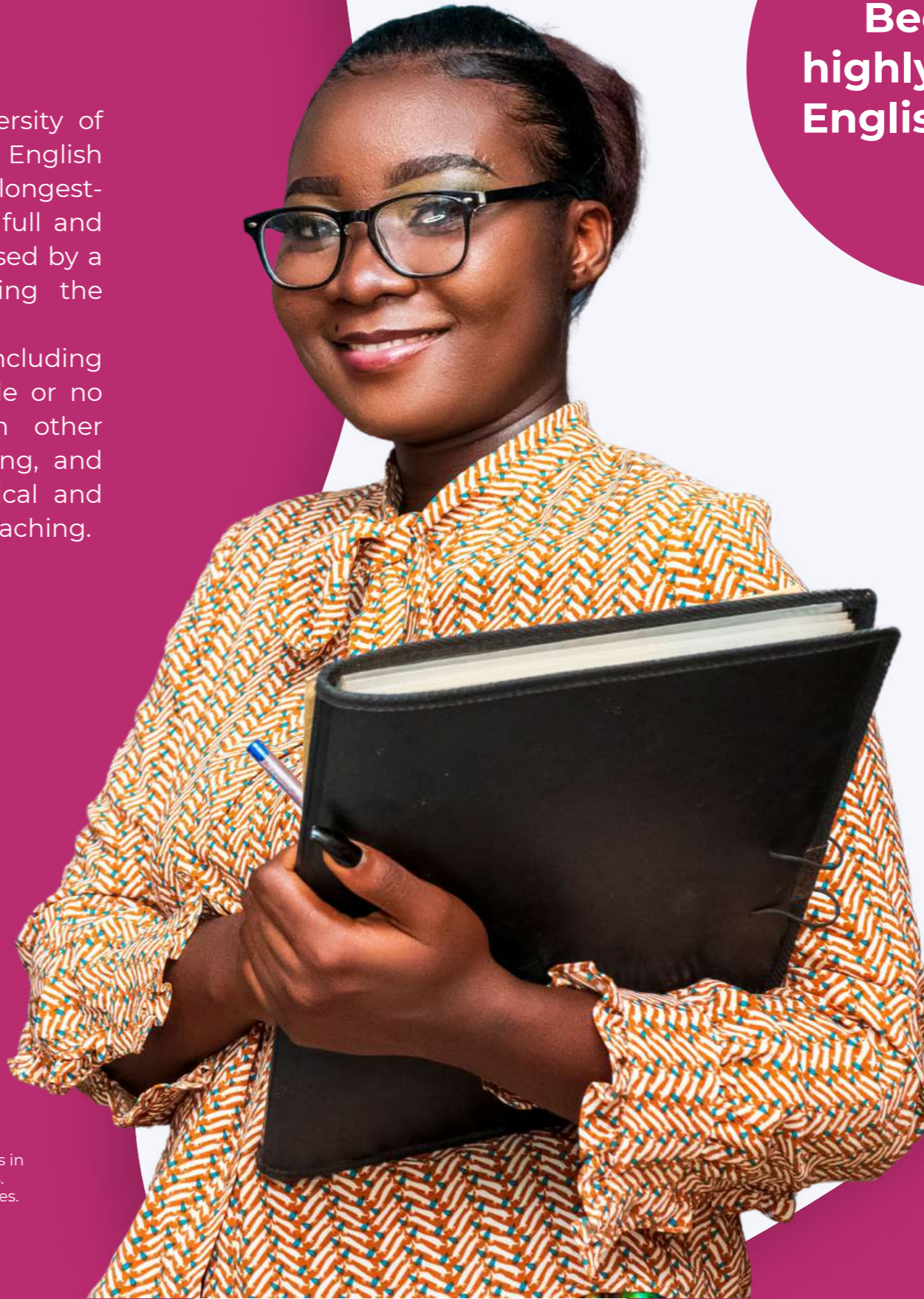
Full-Time In Person

09.00 to 17:15
Monday to Friday

Part-Time Online

Flexible schedule*

*Flexible Schedule for online input sessions, which include interactive and collaborative tasks in discussion forums, live sessions, observations of filmed lessons, assignments, and tutorials. Teaching practice with language learners is fixed into two blocks, according to specified dates.



TEACHERS' REFRESHER COURSE

Qualifying participants can access funding from Erasmus.
Check with your National Agency for funding details.

Dates:
15/07 to
26/07

Our Teachers' Refresher Course is designed for teachers whose first language is not English and who wish to refresh their English language skills, while simultaneously exploring new methodologies and different approaches to teaching a language. This course consists of lectures, workshops, and communicative sessions. It is perfect for teachers who wish to take home lots of practical ideas and activities, to use with their students.

Typical sample sessions include:

- Lesson frameworks
- Irish culture sessions Activities for language practice
- Authentic material
- Exploiting technology



DURATION
2 WEEKS



START DATES
15/07 TO 26/07



LEVEL
MINIMUM UPPER-
INTERMEDIATE (B2)



AGE
MINIMUM
AGE 18

SCHEDULE

Monday to Friday,
09:00 – 13:30 and
Monday to Thursday,
14:30 – 15:45

GENERAL ENGLISH + CLIL

Our General English plus Teacher Refresher CLIL programme is designed for teachers whose first language is not English to refresh their English language skills while simultaneously exploring the principles behind CLIL. It is perfect for teachers who wish to take home lots of practical ideas and activities, to use with their students.

From Monday to Friday, students will participate in regular English classes, and twice a week, they will engage in intensive CLIL classes.

Participants in this programme will:

- Develop an understanding of the principles behind CLIL
- Consider methodology, lesson frameworks, teaching strategies, and skills for use with CLIL
- Evaluate, adapt, and design materials for language learning in a CLIL subject
- Share best practices and ideas from the participants' teaching and learning context



DURATION

2 WEEKS



START DATES

01/07 TO 12/07



LEVEL

MINIMUM UPPER-
INTERMEDIATE (B2)



AGE

MINIMUM
AGE 18

SCHEDULE

General English - Monday to Friday, 09:00 – 13:30 and
CLIL Monday and Wednesday, 14:30 - 17:00



**Qualifying participants
can access funding
from Erasmus.**

Check with your National
Agency for funding details.

**Dates:
01/07 to
12/07**

**Qualifying participants
can access funding
from Erasmus.**

Check with your National
Agency for funding details.

**Dates:
01/07 TO
12/07**



GENERAL ENGLISH + STRATEGIES AND EMOTIONAL INTELLIGENCE FOR EDUCATORS

Our General English plus Strategies and Emotional Intelligence for Educators Programme is designed for teachers whose first language is not English, to refresh their English language skills while simultaneously exploring the role of co-operation and conflict in today's educational context. From Monday to Friday, students will participate in regular English classes, and twice a week, they will engage in intensive Strategies and Emotional Intelligence for Educators classes.

Typical sample sessions include:

- Lesson frameworks
- Irish culture sessions Activities for language practice
- Authentic material
- Exploiting technology



DURATION

2 WEEKS



START DATES

01/07 TO 12/07



LEVEL

MINIMUM UPPER-
INTERMEDIATE (B2)



AGE

MINIMUM
AGE 18

SCHEDULE

General English - Monday to Friday, 09:00 – 13:30 and
Co-Operation strategies - Monday and Wednesday, 14:30 -
17:00

**Qualifying participants
can access funding
from Erasmus.**

Check with your National
Agency for funding details.

**Dates:
01/07 TO
12/07**



GENERAL ENGLISH + STRATEGIES AND EMOTIONAL INTELLIGENCE FOR EDUCATORS

Our General English plus Strategies and Emotional Intelligence for Educators Programme is designed for teachers whose first language is not English, to refresh their English language skills while simultaneously exploring the role of co-operation and conflict in today's educational context. From Monday to Friday, students will participate in regular English classes, and twice a week, they will engage in intensive Strategies and Emotional Intelligence for Educators classes.

Typical sample sessions include:

- Lesson frameworks
- Irish culture sessions Activities for language practice
- Authentic material
- Exploiting technology

MINI STAYS



TAILORED GROUP COURSE

DESIGN YOUR GROUP EXPERIENCE

International House Dublin specializes in creating custom language-learning experiences for groups. Whether you're an educator seeking student language programs or a company aiming to enhance employee skills, we can cater to your needs.



1. Select Group Type

Private Group: If you wish to organize a personalized language learning experience with friends, families, or colleagues.

Company Training: If you intend to send a group of employees for language development.

School Trip: If you are a school planning an educational trip.

Local Language School: If you are a language school aiming to take your students on an overseas trip.

Colleges or Educational Institutions: If you are an educational institution interested in offering your students a group trip abroad to enhance their language skills.

2. Choose your Programme

Adults

Choose from any of our Adult or Teacher Training Courses

Tailored Program

Customized for groups, with subject-specific focus. Business workshops and company visits offered. Share preferences for a personalized group learning journey.

3. Choose your accommodation

Homestay

Stay with a friendly local host family, carefully selected by us, for an immersive cultural experience.

Student Residence (18+)

Enjoy living in one of our handpicked student residences, where you can socialize and connect with other international students.

4. Add your extras

Explore our diverse selection of additional services tailored to enhance your experience. Enjoy the convenience of airport transfers, transport card, and exciting social program options

*We welcome bookings for junior groups - feel free to inquire with one of our staff members for additional information.

ACCOMMODATION



ACCOMMODATION FOR ADULT STUDENTS

HOMESTAY

Our carefully chosen host families, selected by the International House Accommodation team, are situated in safe, residential neighborhoods with easy access to IH Dublin via public transport. Homestay accommodation is available year-round to all our students. Living in a homestay presents the ideal opportunity for students to practice their spoken English daily and immerse themselves in the renowned Irish hospitality.

Facilities: Single or twin rooms, shared family bathroom, breakfast, and dinner provided. Special requests, such as private bathrooms or specific dietary needs, can be arranged. Bed linen is provided, and access to laundry facilities is available once per week.

Distance from School: Approximately 30 to 60 minutes by public transport to school*

*Travel time may vary at peak times



Experience
local culture
and enhance
your English
through daily
practice.

ACCOMMODATION FOR ADULT STUDENTS STUDENT RESIDENCE

IH Dublin offers high-quality, self-catering apartments available for students aged 18 and above. These apartments provide easy access to the school via public transport, being conveniently located in the city center.

Facilities: single ensuite bedroom in a shared apartment, modern and fully-equipped kitchen, and a comfortable living room, free Wi-Fi, 24/7 reception, gym, onsite café, laundry room, secure indoor bike storage, study lounge, cinema room, and gaming area.

Distance From school: 20 minutes by public transport

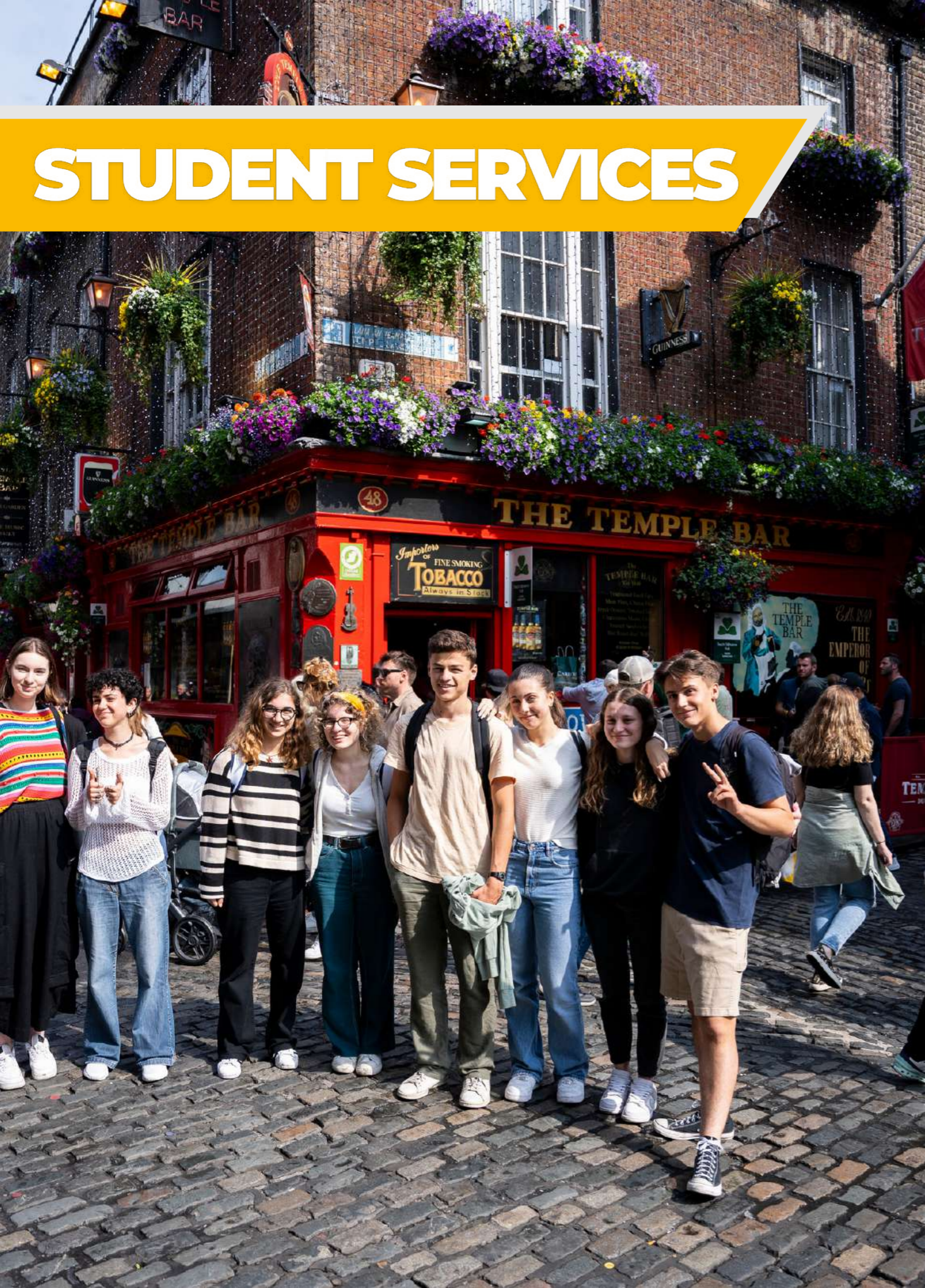
*Travel time may vary at peak times

A photograph of a modern student residence room. The room features a white desk with a yellow chair, a bed with a blue and white checkered duvet and pillows, and a white shelf above the bed. A glass of water sits on the desk. The room is well-lit and has a clean, contemporary feel.

Convenient city center location and access to various facilities

Click here for more pictures of the student residence

STUDENT SERVICES



SOCIAL PROGRAMME

IH Dublin's weekly Social and Cultural Programme provides an array of exciting activities and trips for students to join, fostering a diverse and immersive cultural experience. Students are encouraged to participate in any or all of the activities each week, creating opportunities to make friends from around the world and fully experience Irish life. Additionally, IH Dublin organizes interactive sessions outside the classroom to help students improve their English skills, including Conversation, Culture and language, Pronunciation, Exam Strategies, and Guidance for Self-Study.

Here are some activities you can look forward to:

- City Tours
- Workshops
- Museum Visits
- Pub Night or Pub Crawl
- Football
- Celebrations (St. Patrick's, Easter, Halloween)
- Job Skills Workshop
- CV Workshop
- Conversation Club
- Day Trips around Dublin and Ireland
- Visits to Dublin tourist spots and landmarks



Study Club



CV Workshop



Day -Trip



Cultural excursions



Sports



Celebrations

STUDENT WELFARE

IH Dublin places a focus on Student Services, aiming to ensure that every student is familiar with the range of resources our school provides. These resources encompass strong academic support, interactive student activities designed to enhance speaking and listening skills, exam assistance, and the availability of a dedicated welfare officer for one-on-one meetings.



**Student
Welfare
Officer
available**



Allow us to introduce our sister company, Independent College, conveniently situated within the same building. Independent College is a contemporary, independent third-level institution with a focus on Business and Law. If you're an IH student, you have the opportunity for a smooth transition to higher education. Through this partnership, we offer you a straightforward admission process to continue your studies in Ireland's third-level education, along with exclusive discounts.

PATHWAY TO HIGHER EDUCATION



**International
House**
Dublin

Follow us

