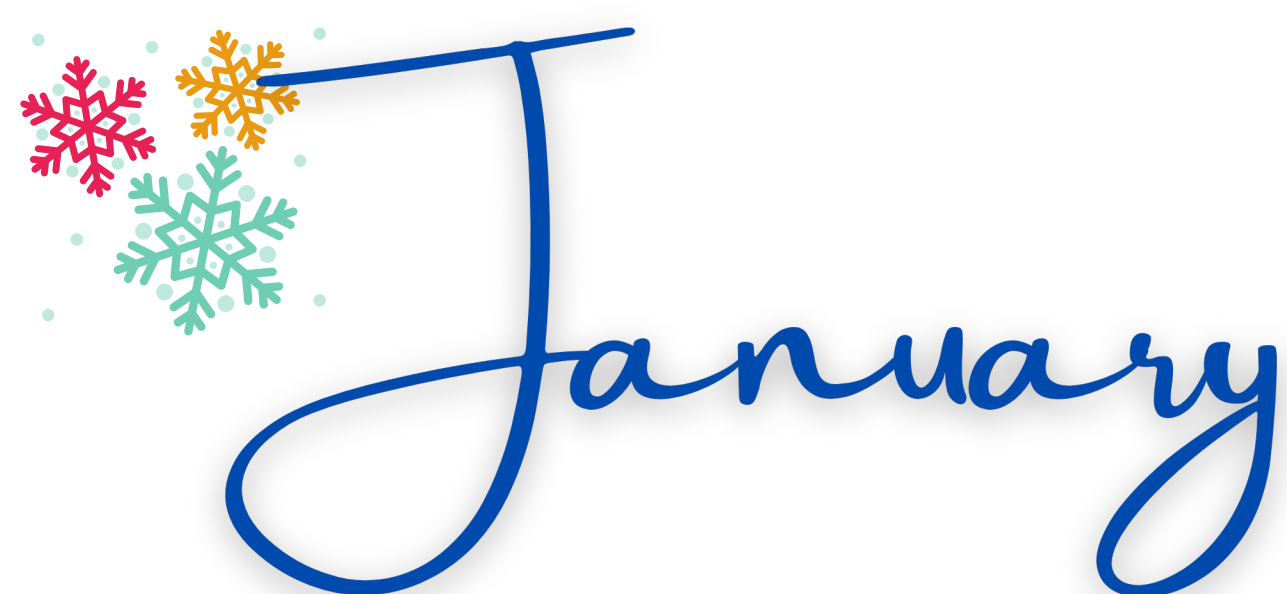


# January's social programme



emerald<sup>®</sup>  
cultural institute

Experience Tradition, Embrace Innovation

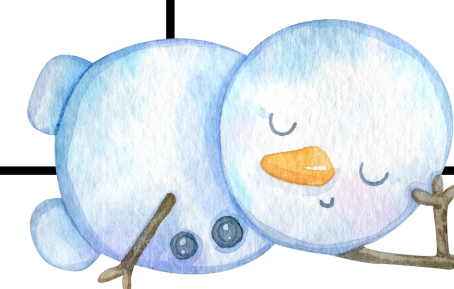


# January

Afternoon students only  
Morning students only

MON	TUE	WED	THU	FRI	SAT	SUN
1 Christmas Holidays	2 Christmas Holidays	3 Christmas Holidays	4 Christmas Holidays	5 Christmas Holidays	6 Christmas Holidays	7 Christmas Holidays
8 Induction Induction & City Orientation	9 City Orientation INIS seminar	10 Board Games	11 National Gallery	12 Whiskey Museum 	13 Blarney Castle and County Cork	14
15 Induction Induction & City Orientation	16 City Orientation INIS seminar	17 Speed Friending 	18 Pearse Museum	19 Christchurch	20 Kerry Day Tour	21 
22 Induction Induction & City Orientation	23 City Orientation INIS seminar	24 CV and Job Search	25 Hugh Lane	26 EPIC Ireland	27 Glendalough, Wicklow & Kilkenny	28
29 Induction Induction & City Orientation	30 City Orientation INIS seminar	31 Language Exchange				

Afternoon students only  
Morning students only



### Board Games

A selection of board games to play with your friends. Playing board games with other students is not only a way to enjoy yourself, but also to practice your English speaking skills and enrich your vocabulary by interacting with the other players.

*Please sign up for this activity by Tuesday. Emerald reserves the right to cancel this activity due to a low number of participants (minimum 6 students required).*

### City Orientation for new students

A 45-minute walk through Dublin city centre with our Emerald Guide. Transport tickets will be discussed as well. A great activity for new students on their first day.

### CV Preparation

This activity will provide you with some tips for writing your CV and Cover Letter appropriately and for searching for a job in Ireland. Furthermore, you can ask for proofreading of your CV.

### Hugh Lane

The gallery's original collection of modern art was presented by Sir Hugh Lane in 1908 and has, over the last century been enhanced by notable bequests, gifts, and acquisitions including Francis Bacon's Studio and Archive and Sean Scully's gift of paintings.

*Please sign up for this activity by Wednesday. Emerald reserves the right to cancel this activity due to a low number of participants (minimum 6 students required).*

### INIS seminar

This seminar is for all new students who will need to go and register with the Irish Naturalisation and Immigration Service. Opening a bank account, requesting a PPS number, and taking holidays will be discussed as well.

### Language Exchange

Learning another foreign language can be a significant advantage in your career as long as allowing you to connect with others. Practice and learn another foreign language meeting up for conversation exchange with other students.

*Please sign up for this activity by Tuesday. Emerald reserves the right to cancel this activity due to a low number of participants (minimum 6 students required).*

### National Gallery

The National Gallery of Ireland in Dublin boasts some 2,500 paintings and approximately 10,000 other works in different media including watercolours, drawings, prints and sculpture.

*Please sign up for this activity by Wednesday. Emerald reserves the right to cancel this activity due to a low number of participants (minimum 6 students required).*

### Pearse Museum

The Pearse Museum and St Enda's Park was where Patrick Pearse lived and ran his innovative Irish-speaking school, Scoil Éanna, between 1910-16. Set in nearly fifty acres of beautiful parkland, the museum tells the story of Patrick Pearse and his brother William, both of whom were executed for their part in the 1916 Rising.

*Please sign up for this activity by Tuesday. Emerald reserves the right to cancel this activity due to a low number of participants (minimum 6 students required).*



**emerald**<sup>®</sup>  
cultural institute

Experience Tradition, Embrace Innovation

### Speed Friending

Come and meet new friends at our speed friending appointment! You will have 3 minutes to chat with another student, then you will be asked to move and chat with another of your partners.

*Please sign up for this activity by Tuesday. Emerald reserves the right to cancel this activity due to a low number of participants (minimum 6 students required).*



**emerald**<sup>®</sup>  
cultural institute

Experience Tradition, Embrace Innovation

## **Paid Activities**

### Christchurch

Christ Church Cathedral has stood at the heart of Dublin for almost 1,000 years. Many visitors from all over the world are welcomed to this important heritage site every day.

*Please sign up for this activity by Wednesday. Emerald reserves the right to cancel this activity due to a low number of participants.*

### Epic Ireland

Epic Ireland is the dramatic 21st Century visitor experience showcasing the unique journey of the Irish people around the world through the ages, centrally located in the beautiful vaults of the 1820 CHQ building. Through 21 remarkable galleries, using cutting-edge interactive technologies, visitors explore the many tales of migration, the forces that have driven it, and the impact that it has had on the world.

*Please sign up for this activity by Wednesday. Emerald reserves the right to cancel this activity due to a low number of participants.*

### Irish Whiskey Museum

Learn the origins of Irish whiskey and discover some new Irish brands.

1-hour guided tour and 3 whiskey tastings. Soft drinks are included for non-drinking adults.

*Please sign up for this activity by Wednesday. Emerald reserves the right to cancel this activity due to a low number of participants.*



**emerald**<sup>®</sup>  
cultural institute

Experience Tradition, Embrace Innovation