

**English
Language
Company**

elc.edu.au

Sydney, Australia

—
2024
—

English made easy





Welcome to ELC

Living and studying in another country can be a life-changing and unforgettable experience. So, choosing where to study is a big decision. To help you make the right choice here are just some reasons why students choose ELC to help them succeed in their studies or careers.



LIVE IN ONE OF
THE BEST CITIES
IN THE WORLD



04



STUDY AT
AUSTRALIA'S
MOST AWARDED
ENGLISH SCHOOL



05

English
Language
Company



YOUR ELC
EXPERIENCE



*Great learning environment
Excellent teachers
Fantastic nationality mix*

06

ENGLISH MADE
EASY



*Customised courses
Collaborative learning
Interesting classes*

08

YOUR AUSTRALIAN
EXPERIENCE



*Busy social activities program
Travel advice and bookings
Student experience team*

10



CHOOSE YOUR
NEW HOME



*Modern apartment living
Australian family life
Shared student houses*

12

WE CAN HELP YOU
FIND WORK



*Working holidays
Internships
Student jobs*

14



CHOOSE THE
RIGHT COURSE
FOR YOU



*Wide range of courses & electives
Day and evening timetables
Free activities, clubs & workshops*

16

Live in one of the best cities in the world

Sydney is consistently rated as one of the world's best destinations for international students.



Sharon Keller, Switzerland

"Sydney is an amazing city and has a lot to offer. I loved strolling around Darling Harbour which was only 5 minutes away from ELC and to enjoy the gorgeous beaches at the weekend. I participated in many events organised by ELC, which gave me a unique opportunity to meet people from all over the world and to explore the city."

Live in sunny Sydney

Sydney is the largest and most cosmopolitan city in Australia but it's also beautiful, safe and clean. It has a lively city centre and great nightlife. Sydney is a large city but you can go surfing, scuba-diving, bushwalking or just relax on the beach – all within the Sydney metropolitan area. Very importantly, our students always find the people very friendly and welcoming.

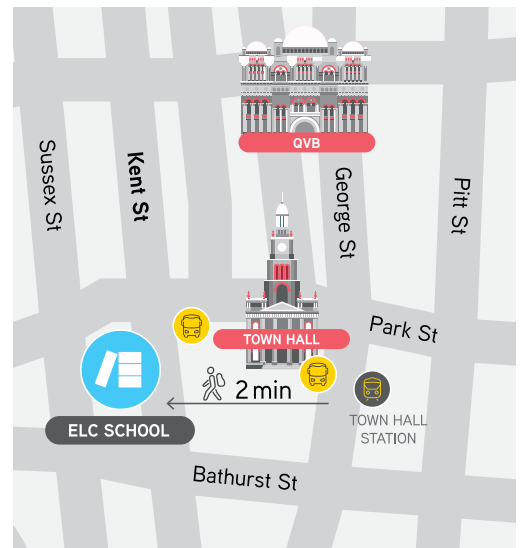
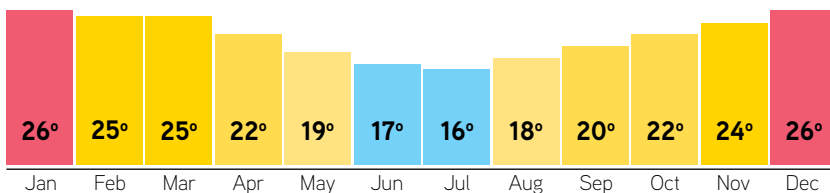
The climate is great with hot summers and mild winters so it's easy to enjoy the outdoors.

Study in the heart of the city

You'll be studying right in the city centre:

- > 4-minute walk from Sydney's premier shopping centre
- > 2-minute walk from the main train station
- > 5-minute walk from Darling Harbour
- > 5-minutes by train to the Opera House
- > 10-minute walk to student residences and apartments
- > Close to city centre cafes and cinemas

What's the weather like?





Study at Australia's most awarded English school

STM Lifetime Super Star Award – Southern Hemisphere



Multi award-winning English school

ELC is a multi-award-winning English language school. In the Study Travel Magazine awards (this is the Oscars for schools!) ELC has won the prestigious award 'Star Language School, Southern Hemisphere' 5 times and is the only school in Australia to have achieved "Lifetime Super Star" status.

ELC is also proud to consistently achieve certificate of excellence status and feature in best school awards lists from our agency partners around the world every year.



Accredited & quality assured

We're fully-accredited by the Australian government and quality-endorsed so you can be confident that you will receive the very best education and service.



STM Lifetime Super Star Award - Southern Hemisphere



EXCELLENT
TEACHING AND
INTERESTING
LESSONS



FANTASTIC
NATIONALITY MIX
AND FRIENDS
FROM AROUND THE
WORLD



OUR STUDENT
EXPERIENCE TEAM
WILL ENSURE
YOU HAVE A
GREAT TIME



COMFORTABLE
STUDENT
LOUNGES AND
GREAT LEARNING
ENVIRONMENT



Your ELC experience



ELC was founded and is operated by teachers, so we know what it takes to make a great school - engaging courses; excellent teachers; personal attention and lots of activities to choose from! All of this shared with students from around the world and delivered by people who are passionate about what they do. ELC is a fun school that is serious about learning!

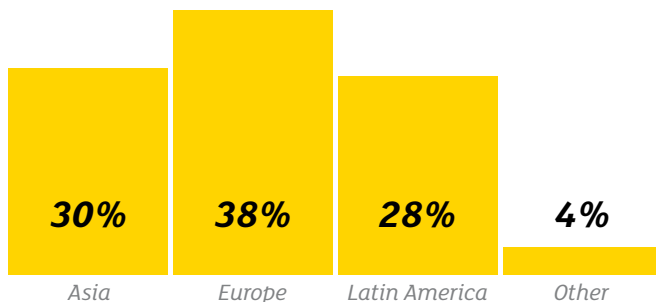
Learn in a great environment

Comfortable, well-equipped classrooms and collaborative learning spaces create an effective learning environment. Our unique eat, meet and speak spaces are the perfect places to break out and use your English.

- > 24 bright and large well-equipped classrooms
- > 2 comfortable student common areas
- > Chill spaces for quiet learning, reading or relaxing
- > Kitchen and dining area
- > Quiet study room with computer access
- > Information and travel desks
- > Free WiFi

Fantastic nationality mix

ELC students come from over 50 countries so you will have to speak English to communicate and it'll be easy to make lifelong friends from around the world.



Average nationality mix of daytime classes.



Excellent teachers

Our students consistently rate ELC teachers as excellent. All teachers are qualified and experienced with university degrees and specialist TESOL qualifications.

They will deliver lessons that are engaging and fun and relevant to your daily life. They'll also make sure that you get personal attention in class and through tutorials to make sure that you make maximum progress in your English.

Student support

ELC has dedicated professional and friendly staff who are there to support you and ensure you have the best experience possible.

They can help you with academic matters but also your accommodation, transport, medical care, travel or just general everyday life in Sydney.



English made easy



Studying abroad is a once in a lifetime opportunity for you to accelerate your learning and progress to the level you want to achieve. It may seem difficult, but it's our job to make it easy! So how do we do it?

The right level for you

Before you arrive or on your first day at ELC you'll take a placement test. You'll also have a spoken interview so we can place you in the class that's right for you. You'll then choose your elective classes which are also streamed by level.

Our methodology

You will have many opportunities to communicate throughout the lesson with your teacher and classmates. Your teacher will use a variety of approaches to present and practise language and skills in real-world contexts.

Collaborative learning

Our classrooms and learning spaces have been specifically designed to facilitate communication and comfort and give you variety in your learning day.

Learning and technology

Lessons are all face-to-face but teachers use the latest digital resources to ensure that your lessons are varied, up-to-date and dynamic. You can also access free online lessons to complete in your own time if you want.

Fast pace, maximum progress

Our classes are intensive but it's the whole experience that will ensure that your English improves a lot in a short time. Speaking English all day, taking part in our activities around Sydney, socialising with your classmates will all assist your progress.

Customised courses

We offer a range of major English courses which are complemented by your choice of electives so that you can learn exactly what you need. Choose your core course when you enrol and then the electives once you are at ELC. It's easy!

Assessment methods

You'll take weekly short progress tests to revise what you've just studied. You'll also take language and skills tests in the middle and at the end of each level of your course to assess your progress and ensure that you are on track to achieving your study goals.

Optional activities, classes and workshops

On Fridays we offer a range of classes and activities you can join. They are the perfect opportunity to do the things that interest you most and which are the most relevant to you.

Coursebook to keep

On the first day of your new class and if you change course or level, you'll be given a coursebook. This is your choice of paperback or e-book. We think that it is important that classes follow a coursebook to give their program structure and for you to use as a reference in the future.

Small classes

We have small classes so that you can get the attention you need. Our maximum class size is 16 students with an average of 13.

Study plans

Longer term students are encouraged to attend our course options seminars and draw up an individualised plan of study with our senior academic team. We discuss your goals and help you plan your route to them, including which electives and English Extras discuss to choose as well as any external examinations.

Certificates and level records

On your last day you'll receive a certificate. This is a record of the course(s) you completed at ELC, which you can show to prospective employers or higher education institutes. You'll also receive a record of your current level of language proficiency when you complete a level/course.

Your Australian experience



Outside of class time, you'll be immersed in English and have the chance to make new friends, do amazing things and discover Australian life. Our dedicated student experience team are here to help you achieve this. As soon as you start your course, you'll have the opportunity to join excursions and events organised by the school, to plan and book onwards travel, as well as to meet new people and open up to new experiences.

Enjoy Sydney

SOCIAL, CULTURAL AND SPORTING ACTIVITIES

Every week ELC students meet after school for our new student welcome. This is a great opportunity to get to know your classmates. Then every week and weekend we organise great things for you to do to ensure that you make the most of your time with ELC!

- > Museums, exhibitions and galleries
- > Beach barbecues
- > Parties and bars
- > Sightseeing trips
- > Excursions
- > Soccer, beach volleyball, surfing

Explore Australia

TRAVEL DESK

Australia is a fantastic place to travel with amazing sights and experiences, good accommodation and transport. Check out the travel desk at school and gather information on the best places to go and book your trips and tours at exclusive prices. Or come along to our free presentations on Australia's best destinations.

Find yourself

STUDENT EXPERIENCE TEAM

Always wanted to learn to scuba-dive?
Love to take up paddle boarding?
Keep up your soccer skills.
Take up pilates.
Volunteer your time.
Let our student experience team know what you're interested in and we'll connect you to the clubs, places, classes and people to make it happen.

English Plus Packages



Package your English language course with one of the following bundles of activities:

English Plus Discovery

HAVE UNFORGETTABLE ADVENTURES

Experience the beauty of New South Wales and discover Sydney's iconic landmarks.

You will:

- > Immerse yourself in Australian culture
- > Take memorable day trips and enjoy some of the best sights and experiences in New South Wales
- > Get the chance to visit Sydney's top attractions

The program includes:

- > Four weekend daytrips around NSW
- > Four Sydney must-visit attractions

English Plus Surfing

EXPERIENCE AUSSIE BEACH LIFE

Dive into Aussie culture and learn to catch the perfect wave under the beautiful Sydney sunshine.

You will:

- > Learn to surf in the iconic Sydney & soak up the Aussie surf culture
- > Discover Sydney's most famous and hidden surf spots
- > Raise your awareness of marine conservation

The program includes:

- > 16 hrs of surf lessons (8 x 2-hour)
- > A full weekend surf camp
- > A full day surf trip
- > All surf equipment hire

English Plus Yoga

DEVELOP IN MIND AND BODY

Make the most of your time in beautiful Sydney to unwind and recharge.

You will:

- > Reduce stress and enhance your wellbeing, while cultivating inner peace and mindfulness
- > Improve your flexibility, strength and balance
- > Deepen your knowledge of holistic practices

The program includes:

- > Unlimited yoga classes at local yoga studio (Monday to Sunday)
- > Online Wellbeing course: a life InYoga
- > One night stay at yoga retreat Centre in Royal National Park
- > Equipment hire

NB: These activities are scheduled over a period of 4 weeks. Minimum 4-week enrolment into one of ELC's daytime courses is required. For more information visit www.elc.edu.au

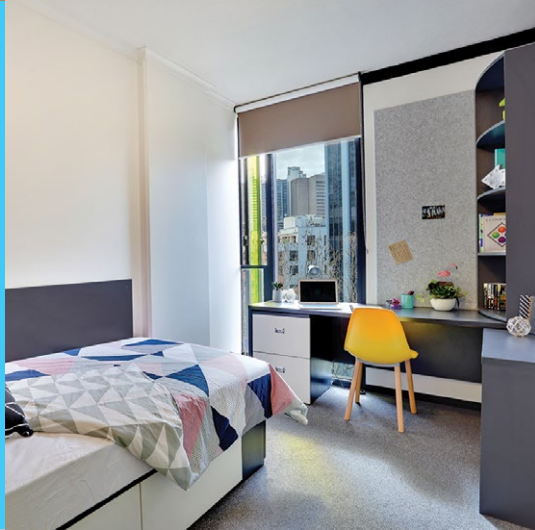


YOUR CHOICE
OF QUALITY
ACCOMMODATION
OPTIONS TO SUIT
YOUR LIFESTYLE



*Premium
Student Residences*

QUALITY
MODERN LIVING
SPACES FOR
STUDENTS



Homestay

LIVE AND
LEARN WITH AN
AUSTRALIAN
FAMILY

*Student houses &
apartments*

SHARE AN
APARTMENT
WITH OTHER
STUDENTS



Choose your new home



We have a choice of quality accommodation to suit your preferences and budget. All of our accommodation options will give you a comfortable and safe environment where you can feel at home.

Homestay

Stay with one of our friendly families and you will experience typical Australian life.

- > Carefully selected families, with a genuine desire to welcome you
- > Comfortable and clean homes
- > Close to public transport
- > Fully-furnished single room
- > Breakfast and dinner are shared with the family (also lunch at the weekend)

Premium Student Residences

Live in a large, modern student residence with great on-site facilities in a central location.

- > Share a premium apartment with other ELC students, within a large student residence
- > Stay in a fully-furnished ensuite single room with your own desk, large window and high speed WiFi
- > Share the modern and fully-equipped living and kitchen areas with 4-5 flatmates
- > Large, communal social area, outdoor terrace, gym, cinema room, games room, laundry and 24/7 security
- > All rooms are equipped with air-conditioning
- > Scape Quay Street Residence: Located in the heart of Sydney, only a 10-minute walk to school
- > Iglu Chatswood Residence: Located only a 20-minute-train ride to the city and ELC

Student houses & apartments

Share a house or apartment with other international students in a convenient location.

- > Modern accommodation, well-equipped and comfortable
- > Conveniently located, either close to public transport or walking distance to the school
- > Single or twin rooms with your own desk and wardrobe
- > Share the living and kitchen areas and bathrooms with your housemates
- > TV, laundry and free WiFi



**Airport
Welcome**

We can arrange to meet you at the airport and take you to your accommodation.

For more photos and full details of our accommodation visit www.elc.edu.au

We can help you find work



Whether you want to work your way around Australia, find part-time work in Sydney or improve your future career opportunities we can help.

Why students who want to work and study choose ELC

1. Our city centre location (opposite the main train station) makes it easy for you to travel between work and school.
2. Our day and evening schedules are timed to allow day students to finish in time to go to work and evening students to travel from work to school.
3. Our Work Ready program is available to all students for free when you start at the school and our work coordinator is available to advise you.



Did you know that in Australia:

- > Student visa-holders can work for up to 48 hours per fortnight.
- > Working holiday visa-holders can work part-time while studying or full-time after their course for the duration of their visa.



Work Ready

We provide a free service to help you find casual work if you have a student or working holiday visa.

WORK ORIENTATION

When you start at ELC you can take our free online course 'Getting a job in Australia' and you'll:

- > Find out where to look for work and how to apply
- > Prepare your resume
- > Practise your interview skills
- > Learn about your rights as an employee.

WORK PREPARATION

In order to make sure that your English is up to the job you can attend Work Ready lessons every second Monday. Topics include:

- > Resumes
- > Job interviews
- > Working in a restaurant

WORK SUPPORT

For more personal support you can:

- > Give your resume to our Work Coordinator for correction
- > Get help completing a job application
- > Discuss a work contract with our Work Coordinator.

WORK & TRAVEL AROUND AUSTRALIA



GAIN PROFESSIONAL WORK EXPERIENCE



WORK AND LIVE WITH AN AUSSIE FAMILY



GET INVOLVED IN CARING FOR OUR NATIVE WILDLIFE



Work and Travel

Your first step towards a once-in-a-lifetime opportunity to become fluent and accurate in English and work and travel in Australia.

What is Work and Travel Company (WTC)?

WTC is a dedicated Working Holiday (WH) agency offering a comprehensive package of services to meet all the needs of WH visitors to Australia - including access to casual jobs which help students fund their travel around Australia.

What's included?

- > Bank account opening
- > Tax File number application
- > Tax Support
- > SIM card on arrival
- > Extensive job database access
- > Expert advice
- > Travelling & living support

Main requirements

- > Hold a working holiday visa (subclass 417 or 462)
- > Minimum 4-week-course at ELC
- > Minimum upper intermediate level upon completion of English course
- > This program can only be booked before arrival in Australia

Professional Internship

A professional internship in Australia will help you to develop the skills and knowledge required for success in your career.

You will

- > Gain valuable experience within your field
- > Develop English skills essential for the global workplace
- > Improve your career opportunities
- > Internationalise your resume

Internships are available in

- > Finance & banking
- > Human resources
- > Web & graphic design
- > Administration
- > Tourism
- > Information technology
- > Marketing
- > Media
- > Plus many more

Main requirements

- > Hold a working holiday visa (subclass 417 or 462) or be eligible for internship visa (special program visa)
- > Minimum 4-week-course at ELC
- > Minimum upper-intermediate level upon completion of English course
- > Some previous study and/or experience for most internship fields

Au Pair and Demi Pair

This is a cultural experience in which in exchange for helping out with childcare or nanny duties and light housework, you are welcomed as a member of the family and offered meals & accommodation.

You will

- > Experience the warmth of a home away from home
- > Discover the joy of cultural exchange
- > Be a big brother/sister
- > Have your own room and meals
- > Receive pocket money (au pair only)

Your duties may include

- > Getting children ready for school
- > Preparing meals for the children
- > Taking children to/from school
- > Some light housework/shopping
- > Helping with homework and play
- > Babysitting

Main requirements

- > Hold a student visa or a working holiday visa (subclass 500, 417 or 462)
- > Minimum 4-week course at ELC for au pair placement (min 12 weeks for demi pair placement)
- > Minimum intermediate level of spoken English
- > Non-smoker
- > Be prepared to commit to minimum 12 weeks with the family (min 24 weeks for au pair placement)

Wildlife Volunteering

If you are an animal lover who also wants to discover rural Australia then this is the perfect program for you.

You will

- > Help to protect Australian wildlife
- > Visit places tourists don't normally see, including remote areas
- > Have the chance to make a volunteer contribution, earn references and certificates

Projects may include

- > Wildlife care & exercise
- > Harvesting & food collection
- > Food preparation & animal feeding
- > Enclosure maintenance & cleaning
- > Wildlife surveys & monitoring of animal behaviour

Main requirements

- > Minimum 4-week-course at ELC
- > Minimum pre-intermediate level upon completion of English course
- > Be aged between 18-70 and have a reasonable level of fitness
- > No specific visa requirements (visitor visa holders welcome)

Choose the right course for you



There are five main course types for you to choose from when you enrol, depending on your main purpose in learning English. However, if you want to switch courses once you're studying with us you usually can, providing you have the right level. Students who study with us for a longer period of time usually combine a number of courses in our academic semester or year programs.

Included in all courses

- > Coursebook
- > Weekly progress tests
- > Tutorials
- > Certificate of completion & record of level

1. General English

- > improve your communication skills and fluency
- > improve your English for a wide range of purposes like travel and work
- > improve your general all-round English before you specialise

2. General + Business English

- > use English effectively in an international workplace
- > improve your English for business studies
- > gain an advantage in your career

3. Cambridge Exam Preparation Courses

- > gain an internationally recognised qualification in English
- > do a high level, very thorough exam course

4. IELTS Exam Preparation

- > prepare for the IELTS examination for general or migration purposes
- > prepare for the IELTS examination for university entry

5. English for Academic Purposes

- > prepare for the demands of university or college studies in English
- > access one of our pathways to higher education in Australia
- > prepare for the IELTS examination for university entry

Course level guidelines

CEFR	GENERAL ENGLISH COURSE	GENERAL + BUSINESS ENGLISH	CAMBRIDGE ESOL	ENGLISH FOR ACADEMIC PURPOSES	IELTS	WHAT YOU CAN DO WITH EACH LEVEL OF ENGLISH
C2			Proficiency			> Enter most undergraduate & postgraduate degrees
C1	↑ 5 Advanced	Business English	Advanced	EAP 3	IELTS - 6.0 +	> Enter many undergraduate & postgraduate degrees > Work professionally in English
B2	↑ 4 Upper Intermediate		First	EAP 2		> Enter some diploma and undergraduate courses > Use English confidently in the workplace
B1+	↑ 3 Intermediate				EAP 1	IELTS - 5.5 + > Enter most vocational courses > Use English at work
B1	↑ 2 Pre-intermediate					> Enter some vocational courses > Use limited English at work
A2	↑ 1 Elementary					

↑ 12 weeks
Each level takes approximately 12 weeks of full-time study to complete.

Timetables

DAY CLASSES

Our day classes are our most popular option for students enrolling from overseas. They offer full immersion and the chance to engage with other students throughout the day, to have full access to school services and to participate in our English Extras classes and social activities. Depending on your level you will follow one of these day timetables:

Mon-Thurs

8.15am - 2.30pm
8.30am - 2.45pm
9.00am - 3.15pm
9.30am - 3.45pm

Fridays

Choice of optional classes between 9am and 3.15.

EVENING CLASSES

Evening classes are a popular choice with students who are working during the day. Our city centre location, directly opposite the train station, makes it easy for students to travel between work and school.

Mon-Fri

5.00pm - 9.20pm (with one 20-minute break)

Students visa holders must study for a minimum of 20 hours per week which can be completed Mon-Thurs (daytime) or Mon-Fri (evening).

Sample Timetable (day classes)

	MONDAY	TUESDAY	WEDNESDAY	THURSDAY	FRIDAY
Major Course General English Lesson 1	Listening Recounting an experience	Speaking Talking about an experience Natural phrases Adding emphasis	Pronunciation Expressing emotions and emphasising	Writing Blog - narrative tense practice	English Extras Your choice of English Extra workshops, classes & activities
Break	Break	Break	Break		
Major Course General English Lesson 2	Vocabulary Describing an experience	Reading & vocabulary 'A test of endurance'	Speaking & listening Showing interest & surprise	Speaking Exchanging holiday stories	
Break	Break	Break	Break		
Major Course General English Lesson 3	Grammar Narrative tenses & preparation for speaking	Grammar Modifying & intensifying adverbs	Vocabulary Phrases with get	Weekly review & test	
Break	Break	Break	Break		
Special Focus Module Communication Lesson 4	Vocabulary & listening Jobs and responsibilities at work	Speaking & pronunciation Talking about your job/ Stress patterns	Grammar & listening Asking questions about a job & about work experience	Extended communicative task Interviewing for a job	
Extra onversation class (Optional)		Conversation		Conversation	

Customise your course



Our aim is to enable you to study, work and travel anywhere in the world with fluent English as your ticket. But we understand that no two students are the same. People have different reasons for learning English and have different learning styles and interests. So, to make sure you achieve your learning goals we encourage you to customise your course to suit your own needs, goals and preferences.



Upgrade to a Premium course

SWAP YOUR SPECIAL FOCUS MODULES OR ENGLISH EXTRAS FOR PRIVATE TUITION

For students who need to improve their English very quickly because they only have a short time in Australia or have exams approaching, we suggest our Premium course options. These combine the benefits of a communicative group class with the intensity of 1:1 lessons.

SPECIAL FOCUS MODULES (DAY COURSES)

Communication

This popular intensive conversation skills class will help you make fast progress with your speaking skills.

Real English

This class teaches you to use English effectively for everyday tasks in Australia, such as shopping, banking and using public transport.

English for further studies

You'll focus on the skills you need to study at university or college in English including presentations and assignments.

Grammar and Speaking

Improve your accuracy and learn how to express yourself in more complex ways.

Full-time day students choose from our range of Special Focus Modules when they start at ELC and can change every 4 weeks. Depending on your level and course, choices include:

IELTS Testbuster

Learn tips for IELTS exam success; complete practice tests and tasks with feedback and target your strengths and weaknesses for exam success.

Cambridge Testbuster

Learn tips for each paper of your Cambridge exam; complete practice tests and tasks with feedback and target your strengths and weaknesses to excel in your exam.

Cambridge Writing Skills

This is for students who especially need to focus on their writing skills for the FCE, CAE or CPE exams.

Cambridge Grammar & Vocabulary

This course is for exam students who need to improve their grammar and vocabulary.

Cambridge Speaking and Listening

This module focusses on the skills needed to do well in the speaking test and listening exam.

EVENING FOCUS

Evening students get to choose a 2-hour Evening Focus class every Friday evening. Choices may include Speaking, Listening and Vocabulary, Pronunciation and conversation, Discover Australia, Video talks, and more.

ENGLISH EXTRAS (DAY COURSES)

We offer a great selection of workshops, activities and classes for all full-time day students. These classes give you the chance to personalise your course, choosing the classes that you need or which interest you the most.

Stream	Friday Classes
Elementary	English for Life
Communication	Conversation & Pronunciation Speak Out
English for Work	Business English Business English Workshops
Exam Skills	Exam Skills Training Exam Practice
English in the City	City Quest Walk and Talk Excursion

Note that options vary from week to week according to student interest and demand.

CONVERSATION & PRONUNCIATION

Practise speaking in a relaxed environment with a different topic every class with a focus on natural English and pronunciation.

SPEAK OUT

These listening & speaking lessons are based around short videos of English speakers talking about an everyday topic. It's a great way to improve your vocabulary as well as your communication skills.

BUSINESS ENGLISH

This class is for students who work or would like to work in a company where a good level of spoken or written English is required.

Lessons focus on practical English skills for the international workplace as well as specialists vocabulary for a range of industries and professions.

ENGLISH FOR LIFE

This class is especially for our elementary students who need survival English and further practice in basic skills to progress quickly.

EXAM SKILLS TRAINING AND PRACTICE

Advice and practice to perfect your skills for each paper of your chosen exam – IELTS or Cambridge.

ENGLISH IN THE CITY

Each week you'll get to know Sydney with the guidance of an ELC teacher. Sometimes we combine a city walk with conversation practice, sometimes we arrange a team activity to discover a suburb of the city and sometimes we visit a place of interest such as the art gallery.

CONVERSATION CLASS (DAY AND EVENING COURSES)

A 1-hour conversation class is offered to all full-time students on Tuesdays and Thursdays, bringing the total hours of tuition to up to 27 hours per week for daytime students and 22 hours for evening students.



General English

Learn to communicate effectively and speak English with confidence

General English classes focus on improving all aspects of your English and in particular your communication skills, fluency and confidence.

1. Intensive General English CRICOS course code: 050701A

This is our popular full-time course which allows you to improve your all-round English combined with areas of individual focus according to your needs, strengths and weaknesses.

DAY	15hrs GENERAL ENGLISH	5hrs SPECIAL FOCUS MODULE	5hrs ENGLISH EXTRAS	2hrs CONVERSATION
EVENING	18hrs GENERAL ENGLISH	2hrs EVENING FOCUS	2hrs CONVERSATION	

2. Semi-Intensive General English*

This part-time course is ideal for students who want to have more free time to explore Sydney.

*Not available to student-visa holders

DAY	15hrs GENERAL ENGLISH
-----	---------------------------------

3. Premium English CRICOS course code: 050701A

This course is ideal for students who need to make very fast progress in a short time. It combines group study of General English with one-to-one lessons individually designed for you as well as your choice of English Extras.

DAY	15hrs GENERAL ENGLISH	5hrs ONE-TO-ONE LESSONS	5hrs ENGLISH EXTRAS	2hrs CONVERSATION
-----	---------------------------------	-----------------------------------	-------------------------------	-----------------------------

You will make fast progress in:

- > Everyday communication
- > Fluency
- > Pronunciation
- > Vocabulary
- > Grammar
- > Listening
- > Reading
- > Writing

START DATES	COURSE LENGTH
Any Monday	2-52 weeks
TIMETABLES	CLASS SIZE
Day and evening courses. Premium course day only.	Max 16 (average 13) Premium English includes 1:1 lessons
COURSE LEVELS	
5 levels of General English from elementary to advanced	

For a full list of Special Focus Modules and English Extras see page 19.



General + Business English

Develop your skills for the global workplace

This course is designed for students who need to use English effectively in both general and business environments. Gain a competitive advantage in your career and increase your employment prospects.

1. General + Business English CRICOS course code: 0102025

This course is ideal for students who wish to improve their all-round English combined with a specific focus on business.

DAY	15hrs GENERAL ENGLISH	5hrs SPECIAL FOCUS MODULE	5hrs BUSINESS ENGLISH	2hrs CONVERSATION

2. Premium English for Business CRICOS course code: 0102025

This course allows you to combine group and individual classes and customise your program. The one-to-one lessons are an ideal option for students who have very specific professional needs. One-to-one classes are tailored to your profession and industry.

DAY	15hrs GENERAL ENGLISH	5hrs ONE-TO-ONE LESSONS	5hrs BUSINESS ENGLISH	2hrs CONVERSATION

Business English classes take place on Fridays and include:

- > Daily workplace language
- > Written business communication
- > Business vocabulary
- > Spoken communication at work
- > Essential soft skills
- > Workshops on specialist language for different industries and positions

START DATES	COURSE LENGTH
Any Monday	2–36 weeks
TIMETABLES	CLASS SIZE
Day courses	Max 16 (average 13) Premium English includes 1:1 lessons
COURSE LEVELS	
Intermediate to advanced Minimum entry level B1+ Students must complete ELC's placement test prior to enrolment.	

Cambridge Exam Preparation

Achieve an internationally recognised qualification from Cambridge English

Cambridge English qualifications can help you to gain entrance to university, improve your job prospects and provide evidence of your English for employers. Our preparation courses will enable you to make progress in your all-round English ability whilst developing skills and techniques for exam success.

DAY	15hrs CAMBRIDGE EXAM PREP.	5hrs SPECIAL FOCUS MODULE	5hrs ENGLISH EXTRAS	2hrs CONVERSATION
EVENING	18hrs CAMBRIDGE EXAM PREP.	2hrs EVENING FOCUS	2hrs CONVERSATION	

CAMBRIDGE EXAM COURSE LEVELS OFFERED:

- > Cambridge B2 First (CRICOS course code 0102022)
- > Cambridge C1 Advanced (CRICOS course code: 0102023)
- > Cambridge C2 Proficiency (CRICOS course code: 0102024)

Upon application, you will need to complete a Cambridge Course Entry Test. This will help determine which level is most suitable for you.

SPECIAL FOCUS MODULES FOR CAMBRIDGE STUDENTS

Our Special Focus Modules teach and practise the skills need to do well in the exam. For day courses these are offered as Special Focus Modules in the afternoons. For evening courses these are integrated into main course.

- > Cambridge Writing skills
- > Cambridge Grammar & Vocabulary
- > Cambridge Testbuster: This is our intensive exam tips and practice class.

For our day students we also offer a remedial Cambridge class on Fridays to give extra support to students who have not done as well as expected in their practice exams. Free optional exam skills workshops are also offered, including our popular Cambridge Speaking Extra which provides intensive speaking exam practice.

Cambridge Social Activities

Join your teacher and classmates on social activities, class picnics/BBQs and enjoy a free day trip after your mock exams.



COURSE FEATURES

- > Our Cambridge teachers have completed our ELC Cambridge Teacher Development Program
- > Cambridge coursebook
- > Regular tutorials
- > Online and paper-based exam practice
- > Regular progress tests and 2 mock exams
- > Free Cambridge exam skills workshops/ practice every Friday (daytime)
- > Additional support if you need it

You will improve your:

- > Examination skills
- > Fluency and pronunciation
- > Grammar and vocabulary
- > Writing skills
- > Listening and reading skills

START DATES	COURSE LENGTH
Fixed start dates (see our website)	9 to 12 weeks depending on exam and start date
TIMETABLES	CLASS SIZE
First and Advanced: Day and evening courses; Proficiency: Day course only	Max 16 (average 13)
COURSE LEVELS	
B2 First, C1 Advanced, C2 Proficiency Students must complete ELC's Cambridge placement test prior to enrolment.	



IELTS Exam Preparation

Get the score you need!

This course prepares students for their IELTS examination as well as improving language and skills for academic study. Your improvement in reading, listening, writing and speaking skills as well as your improved range and accuracy of grammar and vocabulary will be reflected in your exam results.

EVENING	18hrs IELTS	2hrs EVENING FOCUS	2hrs CONVERSATION
	IELTS EXAM PREPARATION CRICOS course code: 0102026		

IELTS EXAM PREPARATION CRICOS course code: 0102026

- > Experienced IELTS teachers
- > IELTS coursebook
- > Regular practice tests and mock exams

Day course options

The IELTS preparation course is offered in the evenings at ELC. However, there are 2 options for day students interested in IELTS:

- > Students who need IELTS for entry to further and higher education courses should consider our English for Academic Purposes course which has integrated IELTS preparation and practice.
- > Students enrolled in our General English day course are able to access some IELTS exam preparation, either through our IELTS Special Focus Module in the afternoons and/or through IELTS Exam practice English Extra classes on Fridays.

You will improve your:

- > IELTS exam skills and techniques
- > Academic vocabulary and grammar
- > Academic reading and writing skills
- > Listening skills for IELTS and for academic lectures
- > Speaking skills for IELTS and fluency in academic contexts

START DATES	COURSE LENGTH
Every Monday	2–36 weeks
TIMETABLES	CLASS SIZE
Evening course only	Max 16 (average 13)

COURSE LEVELS

Each level usually requires 12 weeks to complete.
 IELTS 1: IELTS 5.5 (Entry level 5.0/ Target exit level 5.5)
 IELTS 2: IELTS 6.0+ (Entry level 5.5/Target exit level 6.0+)
 Students must complete ELC's placement test prior to enrolment.



English for Academic Purposes

Excel in your university or college studies

Our English for Academic Purposes (EAP) course is the best preparation for students wishing to study in English at an Australian university or college. The course blends IELTS preparation and important academic skills. Whether you want to gain entry to your course via one of ELC's direct entry agreements or by taking the IELTS examination, this program will ensure you are ready to succeed.

1. English for Academic Purposes CRICOS course code: 054401C

This is our popular full-time EAP course, which allows you to improve your academic English skills and prepare for study and exams. It combines a focussed academic major class with the chance to choose from our range of Special Focus Modules.

DAY	15hrs EAP	5hrs SPECIAL FOCUS MODULE	5hrs ENGLISH EXTRAS	2hrs CONVERSATION
EVENING	18hrs EAP	2hrs EVENING FOCUS	2hrs CONVERSATION	

2. Premium English for Academic Purposes

Intensive CRICOS course code: 054401C

This option is ideal if you need to prepare very intensively and need individual support in specific skills or language areas. It combines group study with one-to-one lessons designed to fulfil your specific needs.

DAY	15hrs EAP	5hrs ONE-TO-ONE LESSONS	5hrs ENGLISH EXTRAS	2hrs CONVERSATION
-----	---------------------	-----------------------------------	-------------------------------	-----------------------------

ENGLISH EXTRAS

On Fridays you can get further focused exam practice for IELTS or attend study skills workshops as well as a range of other options.

You will improve your:

- > Speaking skills for tutorials and presentations
- > Academic vocabulary and grammar
- > Academic reading and listening skills
- > Academic writing skills
- > Listening skills for lectures
- > IELTS exam preparation and techniques
- > Research skills
- > Presentations

START DATES	COURSE LENGTH
Any Monday	5-40 weeks
TIMETABLES	CLASS SIZE
Day and evening course. Premium course – day only.	Max 16 (average 13) Premium courses include 1:1 lessons

COURSE LEVELS		
Intermediate to advanced. Each level usually requires 10 weeks to complete.*		
IELTS Entry Level	IELTS Exit Level	ELC Award
5.0	5.5	EAP 1
5.5	6.0	EAP 2
6.0	6.5	EAP 3

*Students must complete the ELC placement test prior to acceptance onto the course.



Academic pathways

All higher and tertiary education institutions in Australia require international students to meet English requirements, usually by showing an IELTS test score. However, ELC also has agreements with many major universities and colleges who allow our students to enter directly into certificate, diploma, graduate and postgraduate programs without an IELTS test, providing you have successfully completed our English for Academic Purposes course at the appropriate level. For a full list of our pathway partners please see our website.



Jin Soo Lee, South Korea

"When I first came to Australia I couldn't understand or speak English. I have made a lot of improvement here at ELC and the Academic English course I am currently doing has really helped me improve my formal English and business vocabulary. I have one year left at university and this course will really help me with my university course as it focuses a lot not just on communication skills but also areas like report writing, essay writing and presentations."

ENGLISH FOR ACADEMIC PURPOSES	
<p>Direct Entry Stream Compulsory Assessment</p> <p>Written assignments, academic presentations and final test</p>	<p>IELTS Stream Non-compulsory Assessment</p> <p>IELTS reading, writing, listening and speaking exam preparation</p>
Direct Entry	IELTS Exam
Further Studies	
<p>Students may enter one of our partner institutions with a successful English for Academic Purposes course result. See full list at www.elc.edu.au</p>	<p>Students take the IELTS test to enter their chosen higher education institution</p>
<p>DIRECT ENTRY STREAM STUDENTS</p> <p>To be awarded an English for Academic Purposes certificate and gain direct entry into one of our pathway institutions, you must successfully complete a minimum of 10 weeks of classwork and assignments and complete all progress tests and a final test.</p>	<p>IELTS STREAM STUDENTS</p> <p>The English for Academic Purposes course will prepare you to take your IELTS exam in Australia as well as improve your academic skills. The course incorporates regular IELTS exam preparation and practice. Assignments are not compulsory (unlike our direct entry pathway) but are recommended.</p>

Academic counselling

If you haven't decided yet what degree or diploma course you would like to do, our academic counsellor will be happy to provide you with all the information you need to make the right decision and will also assist you with your application.

Business Courses



Study business at ELC Career College, upskill for your career and gain an Australian qualification.

Gain an Australian qualification with ELC Career College

First established in 1985 under the name "SELC", ELC Career College is one of Australia's most established colleges for international students. ELC Career College offers Australian business qualifications at certificate, diploma and advanced diploma levels.

BUSINESS	LEADERSHIP & MANAGEMENT	PROJECT MANAGEMENT	MARKETING & COMMUNICATION
<ul style="list-style-type: none"> › Certificate III › Certificate IV › Diploma 	<ul style="list-style-type: none"> › Certificate IV › Diploma › Advanced Diploma 	<ul style="list-style-type: none"> › Certificate IV › Diploma › Advanced Diploma 	<ul style="list-style-type: none"> › Certificate IV › Diploma

Courses designed for your future

ELC Career College courses focus on essential business knowledge as well as practical skills and communication for the workplace.



Designed for international students

ELC Career College courses are designed to make it easy for international students to achieve their further study goals.

- › Course units are carefully selected for a global audience
- › Practical tasks help students to apply their learning
- › ELC Career College trainers are specialised in teaching non-native English speakers

You'll continue to get English language support for as long as you need and can continue to attend English Extra classes at English Language Company for free.

One study package

Trust ELC to take care of your educational journey in Australia. Enrol in your English + Vocational course using our one enrolment form. If you are not sure how long you need to study English for to reach the appropriate level to start your VET course, we can recommend a study plan for you.

One city centre campus

Both colleges are located in the same convenient campus in the centre of Sydney. So, there's no need to change campus when you transition from your English to vocational studies.

One dedicated team

English Language Company and ELC Career College have the same dedicated management and student services team. So, throughout your studies in Australia you will be supported by the same friendly staff who will get to know you well.



See you soon!





English made easy






Sydney

495 Kent Street, Sydney
NSW 2000 Australia
t. +61 2 9267 5688
f. +61 2 9267 5822
e. info@elc.edu.au
www.elc.edu.au

Get Social

#ELCSYDNEY

-  /englishlanguagecompany
-  @ELCSydney
-  /englishlanguagecompany



CRICOS Provider Code 02551G

