

our Locations

ADELAIDE

Level 4, Level 5 & 14, 90 King William Street, Adelaide,
SA 5000

Kitchen: West Kiosk 2, Adelaide Oval, War Memorial Drive,
North Adelaide SA 5006

BRISBANE

Level 6, 7 & 15 Adelaide St. Brisbane City, QLD 4000

MELBOURNE

Level 2, 4 & 8, 341-345 Queen St, Melbourne, VIC 3000

Kitchen 1: Ground Floor, 54 – 56 Latrobe Street,
Melbourne, VIC 3000

SYDNEY

Site 1: Ground, Level 2 & Level 3, 10 Quay St Haymarket
NSW 2000

Site 2: Building 2: Level 2, 187 Thomas St Haymarket NSW
2000

Kitchen: 372-428 Wattle Street, ULTIMO, NSW, 2007

Contact us

☎ 1300 189 154

✉ info@albrightinstitute.edu.au

🌐 albrightinstitute.edu.au



Follow us:



RTO: 45041 | CRICOS: 03553J

Courses

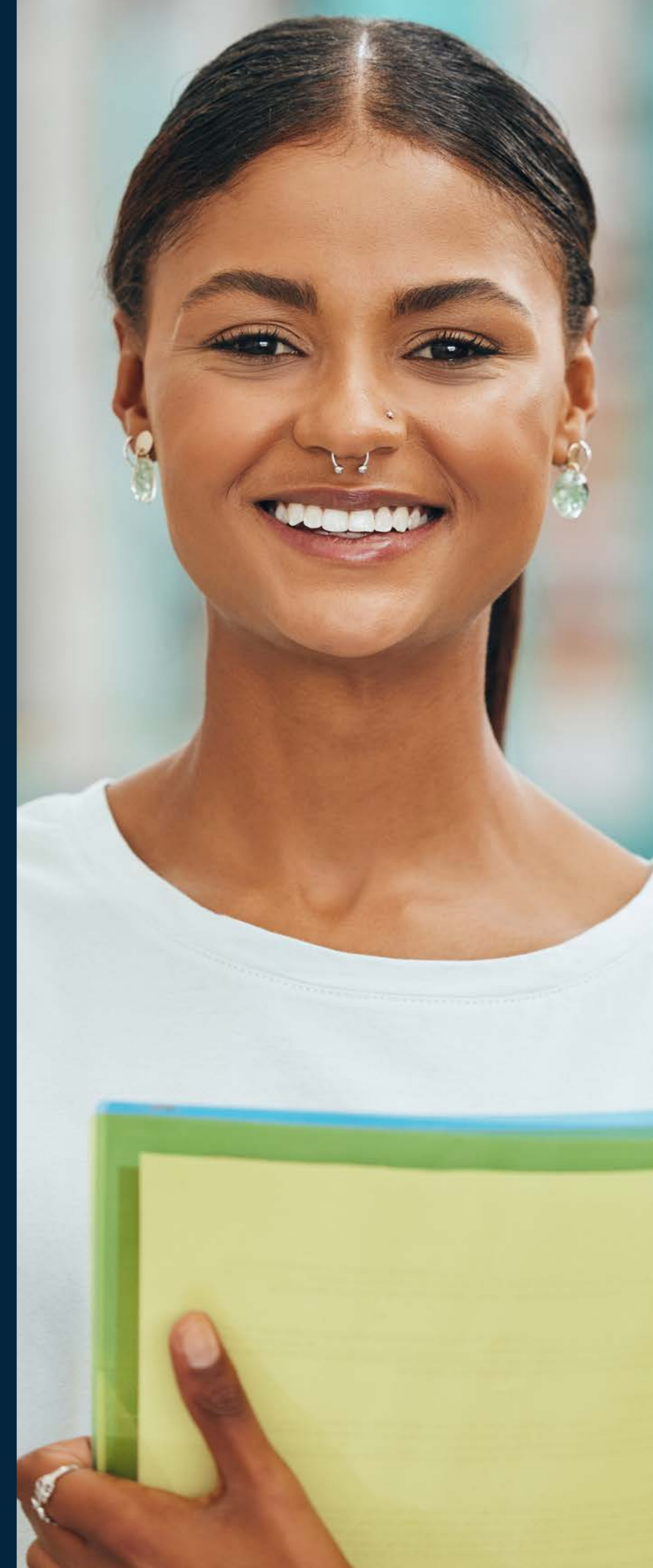
ADELAIDE

BRISBANE

MELBOURNE

SYDNEY

SOON ELITE





**Welcome
to Australia.
Welcome to
Albright.**

**Join us
and say,
#iamalbright**

Albright Institute of Business and Language aims to be the source of inspiration, motivation, and drive for students from all around the world.

We understand the challenges you may face in your new life, be it personal, professional, or educational, and we are always here for you to provide support and assistance.

Our mission is to guide you through your chosen pathway, offering the best available resources, solutions, and opportunities.

Albright is the place for you to call your new home, and we are delighted to welcome you to our family!

| | |
|-----------|----------------------------------|
| 8 | Reasons to count on us |
| 10 | ELICOS Courses |
| 12 | General English |
| 13 | IELTS |
| 14 | Extra curricular courses |
| 15 | General English Sample Timetable |
| 16 | Our Locations |
| 18 | Melbourne |
| 19 | Sydney |
| 20 | Adelaide |
| 21 | Brisbane |
| 22 | Enrolment map |
| 24 | Useful Links |

The pathway to your future is bright.

Reasons to count on us



At Albright, we believe that education is a vital part of everyone's life and that learning English should be fun, engaging, and highly productive.



We offer additional electives and workshops designed to help you with necessary practical skills and knowledge for living, working, and enjoying your life in Australia.



We mix in-class learning with technology and a variety of extracurricular activities.



We offer new facilities with modern classrooms and cutting edge technology.



Our English courses can be combined with Albright Institute of Business and Language vocational courses.



Our teachers are experts in their fields who ensure that your learning journey is exceptional and enjoyable.



Our classes are small and cosy, with a maximum number of 18 students per class to ensure that our educational process is student-centred and personalised.

Innovate yourself at Albright



albrightinstitute.edu.au

General English

International English Language Testing System (IELTS)

ELICOS Courses

COURSE INFORMATION

You will receive 20 face-to-face hours per week and 5 -10 hours of self-study. We offer flexible schedule to cater for your individual needs.

CERTIFICATION

At the end of the course, you may receive a Certificate of Attainment or a Certificate of Participation if your attendance and course progress is satisfactory.

You may not be entitled for either of the certificates if your attendance and course progress is unsatisfactory.

Ref: ELICOS Attendance and course progress monitoring policy and procedure on our website <https://albrightinstitute.edu.au/forms-and-policies/>

ENTRY REQUIREMENTS

Minimum age of 18*

ATTENDANCE (FOR STUDENT VISA HOLDERS)

It is required by the Australian Department of Home Affairs that you attend at least 80% of your classes. Attendance is also part of your course completion requirements, as all ELICOS courses are attendance-based. For more information, please refer to the Albright Attendance Policy at www.albrightinstitute.edu.au.

TIMETABLE**

Morning classes:

Monday - Thursday
8:30am - 1:45pm

Evening classes:

Monday - Thursday
4:30pm - 9:45pm

**Subject to availability



General English

CRICOS: 096826G

Course duration 72 weeks (max)

Our General English course is designed so that you can learn English developing the four essential macro-skills (Speaking, Reading, Writing and Listening) in a vibrant, engaging and interactive environment. We mix face-to-face delivery with the latest technology and extracurricular activities to help you enhance your English skills quickly and easily. Our teachers are accomplished professionals who can guarantee that your academic progress is seamless and consistent.

COURSE STRUCTURE

The course is a 72-week course with 10 weeks allocated for successful completion of every proficiency level:

- Beginner
- Elementary
- Pre-Intermediate
- Intermediate
- Upper-Intermediate
- Advanced

Placement Tests Assessment:

Students are required to sit a placement test prior to commencing their studies to ensure they enrol in the correct level.

Progress Tests:

- every two weeks
- used to inform students on their progress, identify learning gaps and provide strategies for improvement,
- based on grammar and vocabulary from two units of the course book,
- not graded and marked in class (self-check or peer check).

After the test teachers provide detailed feedback to individual students on their progress and performance.

Skills Tests:

- every five weeks,
- used to assess student's English skills development and proficiency level,
- focused on four macro skills – listening, reading, writing and speaking,
- marked by the teacher and the result is recorded.

Skills Test results are used for progressing students to the next level and issuing end-of-course certificates.

PROGRESS

To progress from one General English level to the next, the student must:

- Complete a minimum of **10 weeks (about 3 months)** of study at the current level.
- Maintain an **attendance** rate of **80%**.
- Score **65%** or higher **in each skill** (listening, reading, speaking, writing) on the skill test conducted at the current level.

International English Language Testing System (IELTS)

CRICOS: 096827G

Course duration 12 weeks

COURSE STRUCTURE

IELTS (Advanced) course consists of 12 study weeks.

→ Advanced course

IELTS Preparation course will help you prepare for the IELTS test so you can achieve your ultimate score.

In the IELTS course you will:

- learn the format of all four sections of the test: reading, writing, listening and speaking,
- learn the skills and exam strategies needed to achieve your target IELTS score,
- Improve your overall English language proficiency,
- expand your vocabulary range and improve grammar accuracy,
- do regular IELTS mock tests.

CERTIFICATION

At the end of the course, you will receive a certificate of attainment or a certificate of attendance depending on your academic progress and attendance.

ENTRY PRE-REQUISITES

- Completed Upper-Intermediate level (min. 10 weeks)
- IELTS 6.0 or PTE 50 or Cambridge Assessment 169 or TOEFL iBT 64



Hey!



A series of **English club** run every other Friday from 10 am to 12 pm



Writing Skills & English for Work

Do you find it difficult to structure a letter or email in English? Confused by formal and informal words? Do you need help with your CV or cover letter? Join this class for our top tips on writing and see yourself improve!



Tricky Grammar

If you need extra support with grammar you find difficult or hard to understand, our expert teachers will share their tips and tricks to make learning fun and explain everything in a clear and easy to understand way!



Music Club

Do you sing along to songs in English but are not really sure what they mean? If so, this class is for you! Everyone loves music so why not come along and listen to some of your favourite songs while improving your listening and vocabulary along the way?

Boost your Conversation and Pronunciation

Improve your confidence and fluency in this class while chatting to one of our expert teachers and other students. Learn about different cultures, discuss interesting topics and get feedback on your speaking all while having fun! Each week, you'll become more confident and see yourself improve little by little!



It is essential to sign up for a class at least 3 business days in advance, simply ask a Teacher or a Student Support Officer how to do it.

No enrolment or material fee required.

Extracurricular Activities

Barista Course

Designed for the keen coffee enthusiast who wants to improve the use of their home espresso machine.

Movie Days

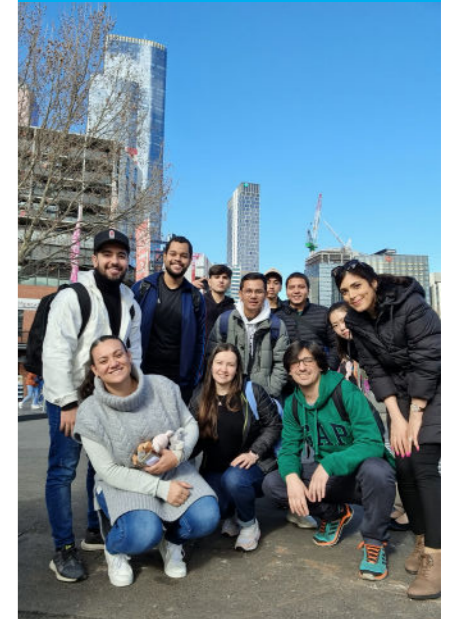
Watch short films and movies, discuss, and write reviews.

Seminars

Industry professionals share their hands-on experience and expert knowledge.

Excursions

Discover and enjoy the famous sights and attractions.



Student Experience (Our Events)



Halloween

Got Talent

International Food Day

Easter Egg Hunt






International Student Day BBQ

Christmas Party

.. and much more



Timetable Sample

| Session | | 1 | 2 |
|-----------|--|---|---|
| Monday |  CLASS DAY | Reading: The secrets of your memory Grammar: Past Simple and Past Continuous | Speaking: Class survey Speaking: How well do you remember the past? |
| Tuesday |  CLASS DAY | Vocabulary: Remembering and forgetting | Listening: Past memories |
| Wednesday |  CLASS DAY | Project: Describe a personal memory | Writing: A paragraph about an important past event |
| Thursday |  CLASS DAY | Viewing: Flashbulb memories | Unit 2: Revision and progress check |
| Friday |  Albright English Club |  English for Work |  Perfect your pronunciation |



Term Breaks

| | ADL | BRIS | MELB | SYD |
|---------------------|-----------------------------------|----------------------------------|----------------------------------|-----------------------------------|
| AUTUMN BREAK | Mon, 15 Apr 24 - Fri, 26 April 24 | Mon, 1 Apr 24 - Fri, 12 April 24 | Mon, 1 Apr 24 - Fri, 12 April 24 | Mon, 15 Apr 24 - Fri, 26 April 24 |
| WINTER BREAK | Mon, 8 Jul 24 - Fri, 19 Jul 24 | Mon, 24 Jun 24 - Fri, 5 Jul 24 | Mon, 1 Jul 24 - Fri, 12 Jul 24 | Mon, 8 Jul 24 - Fri, 19 Jul 24 |
| SPRING BREAK | Mon, 30 Sep 24 - Fri, 11 Oct 24 | Mon, 16 Sep 24 - Fri, 27 Sep 24 | Mon, 23 Sep 24 - Fri, 4 Oct 24 | Mon, 30 Sep 24 - Fri, 11 Oct 24 |
| SUMMER BREAK | Mon, 23 Dec 24 - Fri, 10 Jan 25 | Mon, 23 Dec 24 - Fri, 10 Jan 25 | Mon, 23 Dec 24 - Fri, 10 Jan 25 | Mon, 23 Dec 24 - Fri, 10 Jan 25 |



Your key to a future that challenges, inspires and excites.

The campuses of Albright Institute are located in the heart of Melbourne, Sydney, Adelaide, and Brisbane Central Business Districts (CBD).

The campuses are moments away from the iconic landmarks and public transport surrounded by beautiful parks and world-class infrastructure.

Discover Australia

our Locations

ADELAIDE

Level 4, Level 5 & 14, 90 King William Street, Adelaide, SA 5000

Kitchen: West Kiosk 2, Adelaide Oval, War Memorial Drive, North Adelaide SA 5006

BRISBANE

Level 6, 7 & 15 Adelaide St. Brisbane City, QLD

MELBOURNE

Level 2, 4 & 8, 341-345 Queen St, Melbourne, VIC 3000

Kitchen 1: Ground Floor, 54 – 56 Latrobe Street, Melbourne, VIC 3000

SYDNEY

Site 1: Ground, Level 2 & Level 3, 10 Quay St Haymarket NSW 2000

Site 2: Building 2: Level 2, 187 Thomas St Haymarket NSW 2000

Kitchen: 372-428 Wattle Street, ULTIMO, NSW, 2007

Want more information?

☎ 1300 189 154

✉ info@albrightinstitute.edu.au

🌐 albrightinstitute.edu.au

Change Campus Location

Melbourne

THE CITY

Melbourne is Victoria's capital city and the 2nd largest city in Australia. According to "The Economist", Melbourne has been named the most liveable city in the world in the recent years for its cost of living, healthcare, infrastructure, and education.

MELBOURNE MUST-SEES

- Drink the world's best coffee
- Check out the amazing street art
- Wander through laneways
- Visit Flinders Street Station
- Stroll the botanic gardens
- Enjoy sport at the MCG
- Visit the Immigration Museum
- Admire Aboriginal art
- Visit Queen Victoria Market
- Go penguin-spotting at St Kilda

EVENTS

- Australian Open
- Melbourne International Comedy Festival
- Melbourne Cup Carnival
- Moomba Festival
- Cricket Boxing Day Test
- AFL Grand Final
- Melbourne Chinese New Year
- White Night Melbourne
- Remembrance Day



Sydney

THE CITY

The Capital of New South Wales, Sydney is the most populous city in Australia and Oceania. Sydney is very well-known for the iconic Sydney Opera House and the Harbour Bridge, however, there is so much more that this city has to offer.

SYDNEY MUST-SEES

- Sydney Opera House
- The Rocks
- Sydney Tower
- Darling Harbour
- The Sydney Harbour Bridge
- State Library of New South Wales
- The Royal Botanic Garden
- The Royal National Park
- The Australian Museum

EVENTS

- The Sydney Festival
- Australia Day
- Mardi Gras
- Vivid Sydney
- City 2 Surf
- Night Noodle Market
- Sydney Zombie Walk
- Sculpture by the Sea
- Sydney to Hobart



Note: With effect from May 10, 2024 the recommended 12-month living cost for a single student is AUD \$29,710.

Adelaide

THE CITY

The capital of South Australia, Adelaide is the fifth most populous city of Australia, and it offers a wide variety of experiences to its residents and visitors. From exquisite wine tasting to partying at an immersive festival – Adelaide has it all, just name it.

ADELAIDE MUST-SEES

- Morialta Conservation Park
- Belair National Park
- Waterfall Gully
- Cleland Wildlife Park
- Gorge Wildlife Park
- Himeji Gardens
- Glenelg Beach
- Onkaparinga River National Park
- Wittunga Botanic Garden
- Adelaide Dolphin Sanctuary

EVENTS

- Adelaide Fringe
- WOMADelaide
- Adelaide Festival of Arts
- Glendi Greek Festival
- Touch Bass
- DreamBIG Children's Festival
- South Australia's History Festival
- Cabaret Festival
- Adelaide Film Festival

Brisbane

THE CITY

The capital of the Sunshine State – Queensland – Brisbane is the place where one can enjoy the lovely subtropical weather throughout the entire year. There is no place for boredom in Brisbane! Discover the gorgeous beaches, learn how to surf and astound your friends with your new skills.

BRISBANE MUST-SEES

- South Bank
- The Epicurious Garden
- Queensland Art Gallery
- The State Library
- Queensland Museum
- The Gallery of Modern Art
- Catholic Old St. Stephen's Church
- St. John's Anglican Cathedral
- Albert Street Uniting Church

EVENTS

- Laneway Festival
- Electric Gardens
- Brisbane Comedy Festival
- Brisbane Cycling Festival
- Six Day Brisbane
- Touch Bass
- Paniyiri Greek Festival
- Brisbane Marathon Festival
- The Ekka

Note: With effect from May 10, 2024 the recommended 12-month living cost for a single student is AUD \$29,710.

Enrolment Map

1.

Choose your course/**courses**

2.

Complete the **Albright Application Form.**

3.

Provide certified copies of:
Your Passport
Your Visa
(if you have a current Australian visa)
Your academic documents
(if applicable)

4.

Receive the **Offer Letter**

5.

Sign acceptance form and **complete the payment**

6.

Receive the **Confirmation of Enrolment (COE)**

7.

Lodge your student visa (if applicable)

8.

Attend the **Orientation day** and complete a **placement test**


Enjoy Studying at **Albright!**





RTO: 45041 | CRICOS: 03553J

Want more information?

1300 189 154 

info@albrightinstitute.edu.au 

albrightinstitute.edu.au 

Accredited by:

